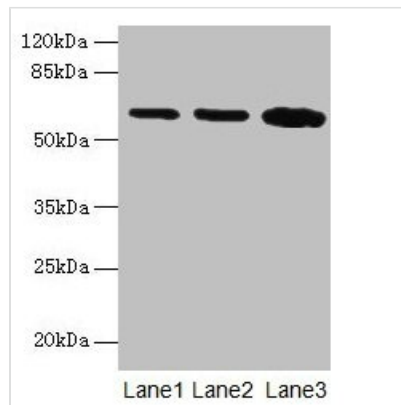




SPTLC2 Antibody

Product Code	CSB-PA022640LA01HU
Storage	Upon receipt, store at -20°C or -80°C. Avoid repeated freeze.
Uniprot No.	O15270
Immunogen	Recombinant Human Serine palmitoyltransferase 2 protein (88-562AA)
Raised In	Rabbit
Species Reactivity	Human
Tested Applications	ELISA, WB, IHC, IF; Recommended dilution: WB:1:500-1:2000, IHC:1:20-1:200, IF:1:50-1:200
Form	Liquid
Conjugate	Non-conjugated
Storage Buffer	Preservative: 0.03% Proclin 300 Constituents: 50% Glycerol, 0.01M PBS, PH 7.4
Purification Method	>95%, Protein G purified
Isotype	IgG
Clonality	Polyclonal
Alias	Serine palmitoyltransferase 2 (EC 2.3.1.50) (Long chain base biosynthesis protein 2) (LCB 2) (Long chain base biosynthesis protein 2a) (LCB2a) (Serine-palmitoyl-CoA transferase 2) (SPT 2), SPTLC2, KIAA0526 LCB2
Immunogen Species	Homo sapiens (Human)
Research Area	Cardiovascular
Target Names	SPTLC2

Image



Western blot

All lanes: SPTLC2 antibody at 12µg/ml

Lane 1: HepG2 whole cell lysate

Lane 2: A549 whole cell lysate

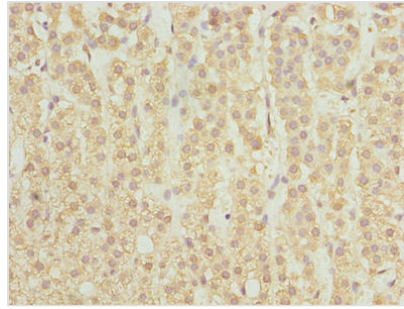
Lane 3: HT29 whole cell lysate

Secondary

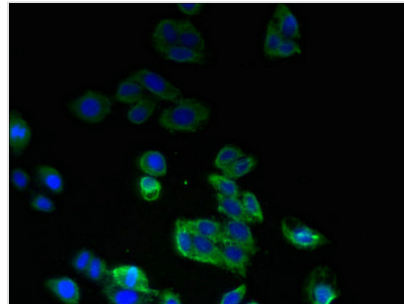
Goat polyclonal to rabbit IgG at 1/10000 dilution

Predicted band size: 63 kDa

Observed band size: 63 kDa



Immunohistochemistry of paraffin-embedded human adrenal gland tissue using CSB-PA022640LA01HU at dilution of 1:100



Immunofluorescent analysis of HepG2 cells using CSB-PA022640LA01HU at dilution of 1:100 and Alexa Fluor 488-conjugated AffiniPure Goat Anti-Rabbit IgG(H+L)

Usage

For Research Use Only. Not for use in diagnostic or therapeutic procedures.