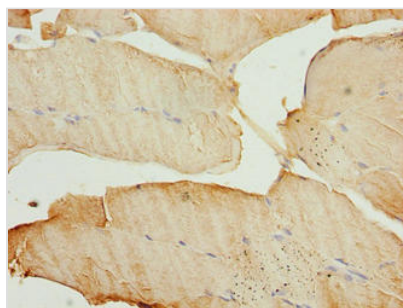




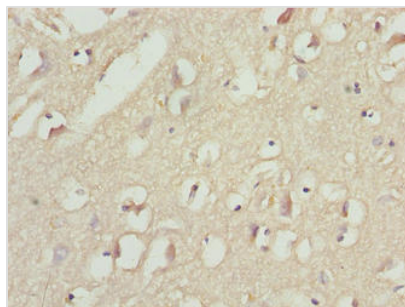
MAP1LC3A Antibody

Product Code	CSB-PA880971DA01HU
Storage	Upon receipt, store at -20°C or -80°C. Avoid repeated freeze.
Uniprot No.	Q9H492
Immunogen	Recombinant Human Microtubule-associated proteins 1A/1B light chain 3A protein (1-120AA)
Raised In	Rabbit
Species Reactivity	Human
Tested Applications	ELISA, IHC; Recommended dilution: IHC:1:20-1:200
Form	Liquid
Conjugate	Non-conjugated
Storage Buffer	Preservative: 0.03% Proclin 300 Constituents: 50% Glycerol, 0.01M PBS, PH 7.4
Purification Method	>95%, Protein G purified
Isotype	IgG
Clonality	Polyclonal
Alias	Microtubule-associated proteins 1A/1B light chain 3A (Autophagy-related protein LC3 A) (Autophagy-related ubiquitin-like modifier LC3 A) (MAP1 light chain 3-like protein 1) (MAP1A/MAP1B light chain 3 A) (MAP1A/MAP1B LC3 A) (Microtubule-associated protein 1 light chain 3 alpha), MAP1LC3A
Immunogen Species	Homo sapiens (Human)
Research Area	Signal Transduction
Target Names	MAP1LC3A

Image



Immunohistochemistry of paraffin-embedded human skeletal muscle tissue using CSB-PA880971DA01HU at dilution of 1:100



Immunohistochemistry of paraffin-embedded human brain tissue using CSB-PA880971DA01HU at dilution of 1:100

Usage

For Research Use Only. Not for use in diagnostic or therapeutic procedures.