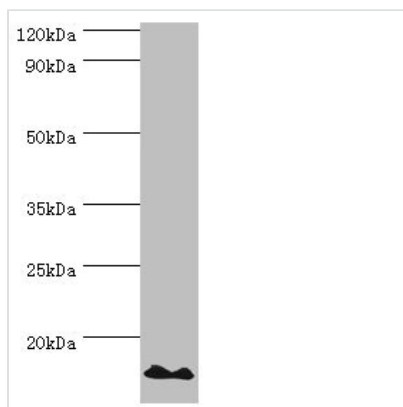




POLR1D Antibody

Product Code	CSB-PA897095ESR2HU
Storage	Upon receipt, store at -20°C or -80°C. Avoid repeated freeze.
Uniprot No.	P0DPB6
Immunogen	Recombinant Human DNA-directed RNA polymerases I and III subunit RPAC2 protein (1-133AA)
Raised In	Rabbit
Species Reactivity	Human
Tested Applications	ELISA, WB, IHC; Recommended dilution: WB:1:500-1:5000, IHC:1:20-1:200
Form	Liquid
Conjugate	Non-conjugated
Storage Buffer	PBS with 0.02% sodium azide, 50% glycerol, pH7.3.
Purification Method	Antigen Affinity Purified
Isotype	IgG
Clonality	Polyclonal
Alias	RNA polymerases I and III subunit AC2, AC19, DNA-directed RNA polymerase I subunit D, RNA polymerase I 16 kDa subunit, RPA16, RPC16, hRPA19, POLR1D
Immunogen Species	Homo sapiens (Human)
Research Area	Epigenetics and Nuclear Signaling
Target Names	POLR1D

Image



Western blot

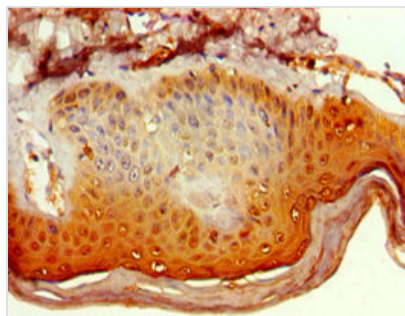
All lanes: DNA-directed RNA polymerases I and III subunit RPAC2 antibody at 10µg/ml + Jurkat whole cell lysate

Secondary

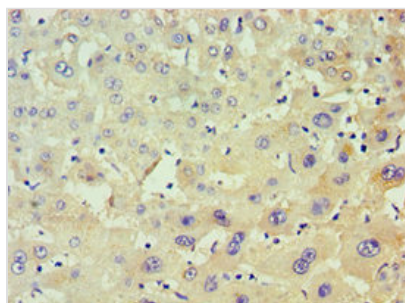
Goat polyclonal to rabbit IgG at 1/10000 dilution

Predicted band size: 16, 15 kDa

Observed band size: 16 kDa



Immunohistochemistry of paraffin-embedded human skin tissue using CSB-PA897095ESR2HU at dilution of 1:100



Immunohistochemistry of paraffin-embedded human liver tissue using CSB-PA897095ESR2HU at dilution of 1:100

Usage

For Research Use Only. Not for use in diagnostic or therapeutic procedures.