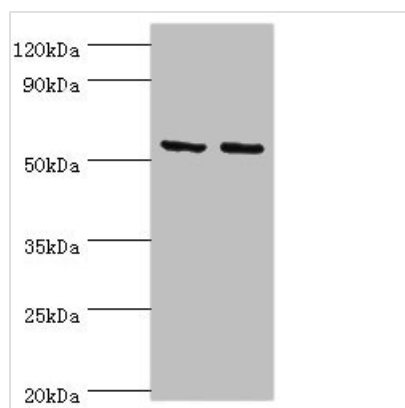




# YARS2 Antibody

<b>Product Code</b>	CSB-PA896882ESR2HU
<b>Storage</b>	Upon receipt, store at -20°C or -80°C. Avoid repeated freeze.
<b>Uniprot No.</b>	Q9Y2Z4
<b>Immunogen</b>	Recombinant Human Tyrosine--tRNA ligase, mitochondrial protein (228-477AA)
<b>Raised In</b>	Rabbit
<b>Species Reactivity</b>	Human
<b>Tested Applications</b>	ELISA, WB, IHC; Recommended dilution: WB:1:500-1:2000, IHC:1:20-1:200
<b>Form</b>	Liquid
<b>Conjugate</b>	Non-conjugated
<b>Storage Buffer</b>	PBS with 0.02% sodium azide, 50% glycerol, pH7.3.
<b>Purification Method</b>	Antigen Affinity Purified
<b>Isotype</b>	IgG
<b>Clonality</b>	Polyclonal
<b>Alias</b>	Tyrosine--tRNA ligase, mitochondrial (EC 6.1.1.1) (Tyrosyl-tRNA synthetase) (TyrRS), YARS2
<b>Immunogen Species</b>	Homo sapiens (Human)
<b>Research Area</b>	Tags & Cell Markers
<b>Target Names</b>	YARS2

## Image



### Western blot

All lanes: Tyrosine--tRNA ligase, mitochondrial antibody at 15µg/ml

Lane 1: K562 whole cell lysate

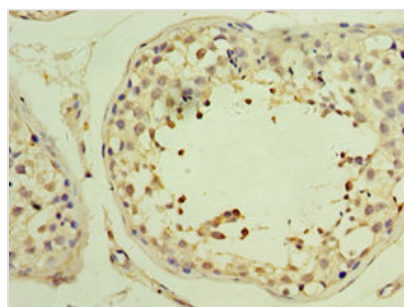
Lane 2: HepG2 whole cell lysate

Secondary

Goat polyclonal to rabbit IgG at 1/10000 dilution

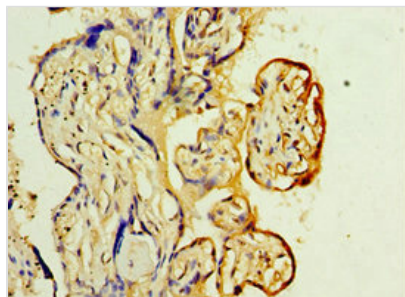
Predicted band size: 53 kDa

Observed band size: 53 kDa



### Immunohistochemistry of paraffin-embedded

human testis tissue using CSB-PA896882ESR2HU at dilution of 1:100



Immunohistochemistry of paraffin-embedded human placenta tissue using CSB-PA896882ESR2HU at dilution of 1:100

## Usage

For Research Use Only. Not for use in diagnostic or therapeutic procedures.