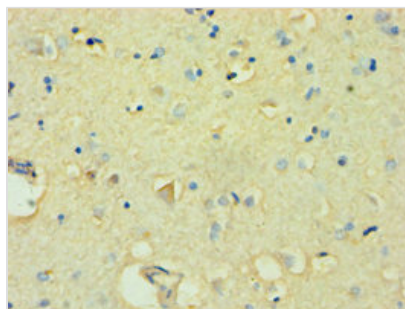




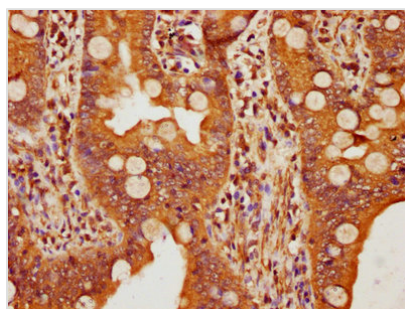
FBXW11 Antibody

Product Code	CSB-PA891721ESR2HU
Storage	Upon receipt, store at -20°C or -80°C. Avoid repeated freeze.
Uniprot No.	Q9UKB1
Immunogen	Recombinant Human F-box/WD repeat-containing protein 11 protein (1-140AA)
Raised In	Rabbit
Species Reactivity	Human
Tested Applications	ELISA, IHC; Recommended dilution: IHC:1:20-1:200
Form	Liquid
Conjugate	Non-conjugated
Storage Buffer	PBS with 0.02% sodium azide, 50% glycerol, pH7.3.
Purification Method	Antigen Affinity Purified
Isotype	IgG
Clonality	Polyclonal
Alias	F-box/WD repeat-containing protein 11 (F-box and WD repeats protein beta-TrCP2) (F-box/WD repeat-containing protein 1B) (Homologous to Slimb protein) (HOS), FBXW11, BTRCP2 FBW1B FBXW1B KIAA0696
Immunogen Species	Homo sapiens (Human)
Research Area	Cell Biology
Target Names	FBXW11

Image



Immunohistochemistry of paraffin-embedded human brain tissue using CSB-PA891721ESR2HU at dilution of 1:100



IHC image of CSB-PA891721ESR2HU diluted at 1:109 and staining in paraffin-embedded human small intestine tissue performed on a Leica Bond™ system. After dewaxing and hydration, antigen retrieval was mediated by high pressure in a citrate buffer (pH 6.0). Section was blocked with 10% normal goat serum 30min at RT. Then primary antibody (1% BSA) was incubated at 4°C overnight. The primary is detected by a biotinylated secondary antibody and visualized using an HRP conjugated SP system.

