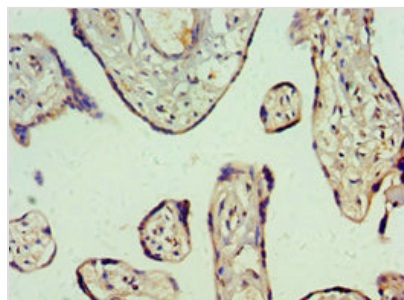




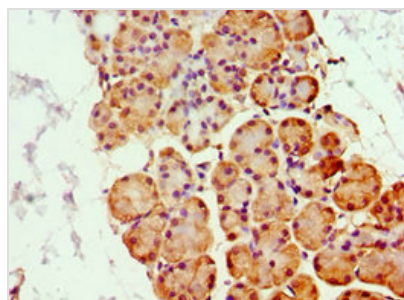
GHRL Antibody

Product Code	CSB-PA871388ESR1HU
Storage	Upon receipt, store at -20°C or -80°C. Avoid repeated freeze.
Uniprot No.	Q9UBU3
Immunogen	Recombinant Human Appetite-regulating hormone protein (1-117AA)
Raised In	Rabbit
Species Reactivity	Human
Tested Applications	ELISA, IHC; Recommended dilution: IHC:1:20-1:200
Form	Liquid
Conjugate	Non-conjugated
Storage Buffer	PBS with 0.02% sodium azide, 50% glycerol, pH7.3.
Purification Method	Antigen Affinity Purified
Isotype	IgG
Clonality	Polyclonal
Alias	Appetite-regulating hormone (Growth hormone secretagogue) (Growth hormone-releasing peptide) (Motilin-related peptide) (Protein M46) [Cleaved into: Ghrelin-27; Ghrelin-28 (Ghrelin); Obestatin], GHRL, MTLRP
Immunogen Species	Homo sapiens (Human)
Research Area	Cardiovascular
Target Names	GHRL

Image



Immunohistochemistry of paraffin-embedded human placenta tissue using CSB-PA871388ESR1HU at dilution of 1:100



Immunohistochemistry of paraffin-embedded human pancreatic tissue using CSB-PA871388ESR1HU at dilution of 1:100



Usage

For Research Use Only. Not for use in diagnostic or therapeutic procedures.