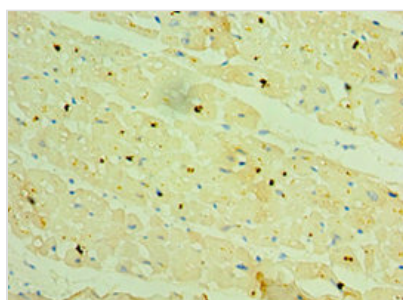




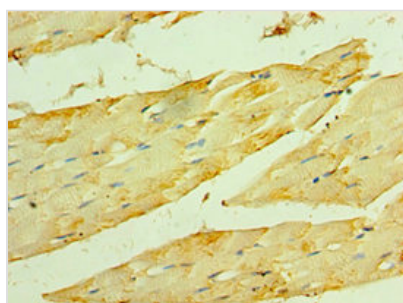
# HSPB2 Antibody

|                            |  |
|----------------------------|--|
| <b>Product Code</b>        | CSB-PA614956ESR1HU   |
| <b>Storage</b>             | Upon receipt, store at -20°C or -80°C. Avoid repeated freeze.          |
| <b>Uniprot No.</b>         | Q16082   |
| <b>Immunogen</b>           | Recombinant Human Heat shock protein beta-2 protein (1-182AA)          |
| <b>Raised In</b>           | Rabbit   |
| <b>Species Reactivity</b>  | Human  |
| <b>Tested Applications</b> | ELISA, IHC; Recommended dilution: IHC:1:20-1:200                       |
| <b>Form</b>                | Liquid   |
| <b>Conjugate</b>           | Non-conjugated   |
| <b>Storage Buffer</b>      | PBS with 0.02% sodium azide, 50% glycerol, pH7.3.                      |
| <b>Purification Method</b> | Antigen Affinity Purified  |
| <b>Isotype</b>             | IgG  |
| <b>Clonality</b>           | Polyclonal   |
| <b>Alias</b>               | Heat shock protein beta-2 (HspB2) (DMPK-binding protein) (MKBP), HSPB2 |
| <b>Immunogen Species</b>   | Homo sapiens (Human)   |
| <b>Research Area</b>       | Signal Transduction  |
| <b>Target Names</b>        | HSPB2  |

## Image



Immunohistochemistry of paraffin-embedded human heart tissue using CSB-PA614956ESR1HU at dilution of 1:100



Immunohistochemistry of paraffin-embedded human skeletal muscle tissue using CSB-PA614956ESR1HU at dilution of 1:100