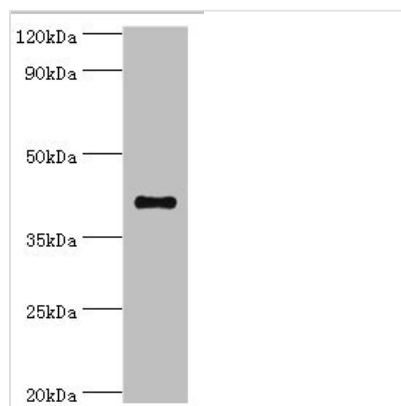




SULT2B1 Antibody

Product Code	CSB-PA022943ESR2HU
Storage	Upon receipt, store at -20°C or -80°C. Avoid repeated freeze.
Uniprot No.	O00204
Immunogen	Recombinant Human Sulfotransferase family cytosolic 2B member 1 protein (1-365AA)
Raised In	Rabbit
Species Reactivity	Human
Tested Applications	ELISA, WB, IHC, IP; Recommended dilution: WB:1:1000-1:5000, IHC:1:20-1:200, IP:1:200-1:2000
Form	Liquid
Conjugate	Non-conjugated
Storage Buffer	PBS with 0.02% sodium azide, 50% glycerol, pH7.3.
Purification Method	Antigen Affinity Purified
Isotype	IgG
Clonality	Polyclonal
Alias	Sulfotransferase family cytosolic 2B member 1 (ST2B1) (Sulfotransferase 2B1) (EC 2.8.2.2) (Alcohol sulfotransferase) (Hydroxysteroid sulfotransferase 2), SULT2B1, HSST2
Immunogen Species	Homo sapiens (Human)
Research Area	Cardiovascular
Target Names	SULT2B1

Image



Western blot

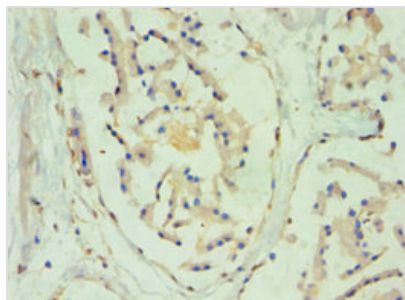
All lanes: Sulfotransferase family cytosolic 2B member 1 antibody at 4µg/ml + MCF-7 whole cell lysate

Secondary

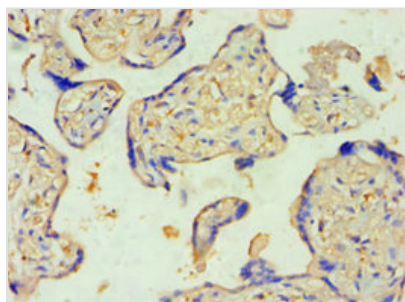
Goat polyclonal to rabbit IgG at 1/10000 dilution

Predicted band size: 42, 40 kDa

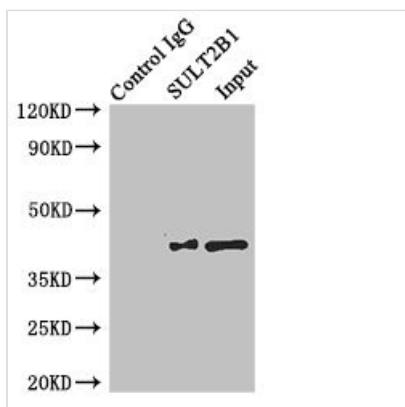
Observed band size: 42 kDa



Immunohistochemistry of paraffin-embedded human prostate tissue using CSB-PA022943ESR2HU at dilution of 1:100



Immunohistochemistry of paraffin-embedded human placenta tissue using CSB-PA022943ESR2HU at dilution of 1:100



Immunoprecipitating SULT2B1 in MCF-7 whole cell lysate

Lane 1: Rabbit control IgG instead of (1μg) instead of CSB-PA022943ESR2HU in MCF-7 whole cell lysate. For western blotting, a HRP-conjugated anti-rabbit IgG, specific to the non-reduced form of IgG was used as the Secondary antibody (1/50000)

Lane 2: CSB-PA022943ESR2HU (4μg) + MCF-7 whole cell lysate (500μg)

Lane 3: MCF-7 whole cell lysate (20μg)

Usage

For Research Use Only. Not for use in diagnostic or therapeutic procedures.