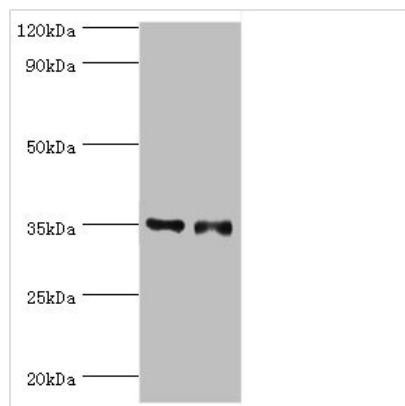




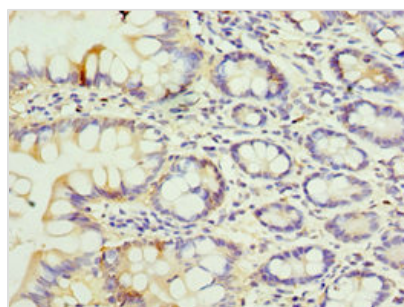
SULT1E1 Antibody

Product Code	CSB-PA022941ESR2HU
Storage	Upon receipt, store at -20°C or -80°C. Avoid repeated freeze.
Uniprot No.	P49888
Immunogen	Recombinant Human Estrogen sulfotransferase protein (140-294AA)
Raised In	Rabbit
Species Reactivity	Human, Mouse
Tested Applications	ELISA, WB, IHC; Recommended dilution: WB:1:200-1:1000, IHC:1:20-1:200
Form	Liquid
Conjugate	Non-conjugated
Storage Buffer	PBS with 0.02% sodium azide, 50% glycerol, pH7.3.
Purification Method	Antigen Affinity Purified
Isotype	IgG
Clonality	Polyclonal
Alias	Estrogen sulfotransferase (EC 2.8.2.4) (EST-1) (Sulfotransferase 1E1) (ST1E1) (Sulfotransferase, estrogen-preferring), SULT1E1, STE
Immunogen Species	Homo sapiens (Human)
Research Area	Signal Transduction
Target Names	SULT1E1

Image



Western blot
 All lanes: Estrogen sulfotransferase antibody at 7µg/ml
 Lane 1: Mouse lung tissue
 Lane 2: Mouse liver tissue
 Secondary
 Goat polyclonal to rabbit IgG at 1/10000 dilution
 Predicted band size: 35, 30 kDa
 Observed band size: 35 kDa



Immunohistochemistry of paraffin-embedded human small intestine tissue using CSB-PA022941ESR2HU at dilution of 1:100



Usage

For Research Use Only. Not for use in diagnostic or therapeutic procedures.