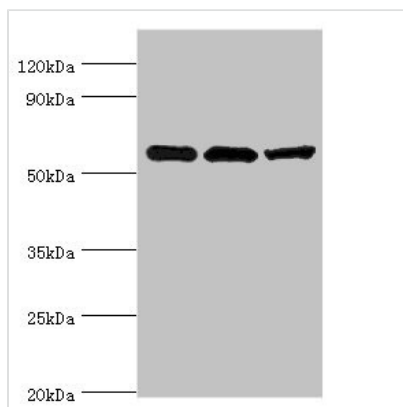




ALDH1B1 Antibody

Product Code	CSB-PA001568ESR1HU
Storage	Upon receipt, store at -20°C or -80°C. Avoid repeated freeze.
Uniprot No.	P30837
Immunogen	Recombinant Human Aldehyde dehydrogenase X, mitochondrial protein (278-517AA)
Raised In	Rabbit
Species Reactivity	Human, Rat
Tested Applications	ELISA, WB, IHC; Recommended dilution: WB:1:500-1:2000, IHC:1:20-1:200
Form	Liquid
Conjugate	Non-conjugated
Storage Buffer	PBS with 0.02% sodium azide, 50% glycerol, pH7.3.
Purification Method	Antigen Affinity Purified
Isotype	IgG
Clonality	Polyclonal
Alias	Aldehyde dehydrogenase X, mitochondrial (EC 1.2.1.3) (Aldehyde dehydrogenase 5) (Aldehyde dehydrogenase family 1 member B1), ALDH1B1, ALDH5 ALDHX
Immunogen Species	Homo sapiens (Human)
Research Area	Signal Transduction
Target Names	ALDH1B1

Image



Western blot

All lanes: Aldehyde dehydrogenase X,

mitochondrial antibody at 4µg/ml

Lane 1: HeLa whole cell lysate

Lane 2: Rat brain tissue

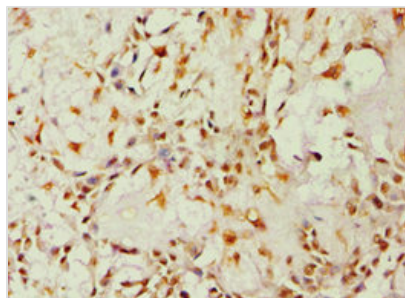
Lane 3: HepG2 whole cell lysate

Secondary

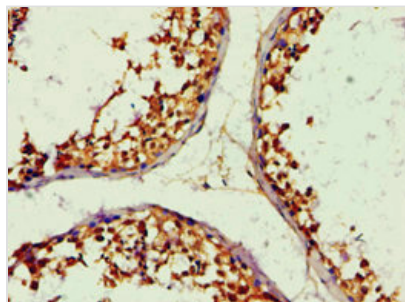
Goat polyclonal to rabbit IgG at 1/10000 dilution

Predicted band size: 57 kDa

Observed band size: 57 kDa



Immunohistochemistry of paraffin-embedded human breast cancer using CSB-PA001568ESR1HU at dilution of 1:100



Immunohistochemistry of paraffin-embedded human testis tissue using CSB-PA001568ESR1HU at dilution of 1:100

Usage

For Research Use Only. Not for use in diagnostic or therapeutic procedures.