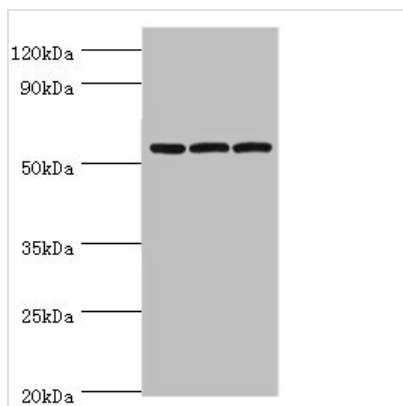




AMY2B Antibody

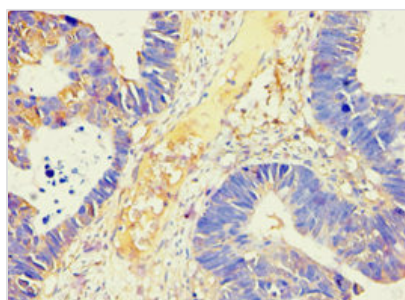
Product Code	CSB-PA001690ESR2HU
Storage	Upon receipt, store at -20°C or -80°C. Avoid repeated freeze.
Uniprot No.	P19961
Immunogen	Recombinant Human Alpha-amylase 2B protein (16-320AA)
Raised In	Rabbit
Species Reactivity	Human, Mouse
Tested Applications	ELISA, WB, IHC; Recommended dilution: WB:1:200-1:1000, IHC:1:20-1:200
Form	Liquid
Conjugate	Non-conjugated
Storage Buffer	PBS with 0.02% sodium azide, 50% glycerol, pH7.3.
Purification Method	Antigen Affinity Purified
Isotype	IgG
Clonality	Polyclonal
Alias	Alpha-amylase 2B (EC 3.2.1.1) (1,4-alpha-D-glucan glucanohydrolase 2B) (Carcinoid alpha-amylase), AMY2B
Immunogen Species	Homo sapiens (Human)
Research Area	Tags & Cell Markers
Target Names	AMY2B

Image

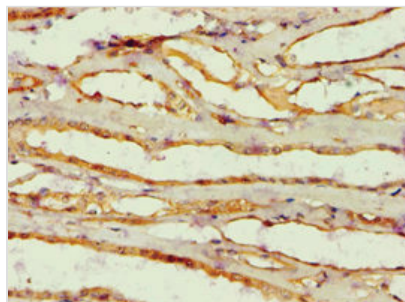


Western blot

All lanes: Alpha-amylase 2B antibody at 8µg/ml
 Lane 1: Mouse skeletal muscle tissue
 Lane 2: HL60 whole cell lysate
 Lane 3: K562 whole cell lysate
 Secondary
 Goat polyclonal to rabbit IgG at 1/10000 dilution
 Predicted band size: 58, 43 kDa
 Observed band size: 58 kDa



Immunohistochemistry of paraffin-embedded human ovarian cancer using CSB-PA001690ESR2HU at dilution of 1:100



Immunohistochemistry of paraffin-embedded human kidney tissue using CSB-PA001690ESR2HU at dilution of 1:100

Usage

For Research Use Only. Not for use in diagnostic or therapeutic procedures.