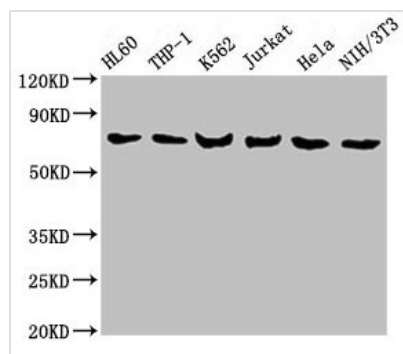




LCP1 Antibody

Product Code	CSB-PA012824YA01HU
Storage	Upon receipt, store at -20°C or -80°C. Avoid repeated freeze.
Uniprot No.	P13796
Immunogen	Recombinant Human Plastin-2 protein (2-627AA)
Raised In	Rabbit
Species Reactivity	Human, Mouse
Tested Applications	ELISA, WB, IHC, IF; Recommended dilution: WB:1:500-1:2000, IHC:1:20-1:200, IF:1:50-1:200
Form	Liquid
Conjugate	Non-conjugated
Storage Buffer	Preservative: 0.03% Proclin 300 Constituents: 50% Glycerol, 0.01M PBS, PH 7.4
Purification Method	>95%, Protein G purified
Isotype	IgG
Clonality	Polyclonal
Alias	Plastin-2 (L-plastin) (LC64P) (Lymphocyte cytosolic protein 1) (LCP-1), LCP1, PLS2
Immunogen Species	Homo sapiens (Human)
Research Area	Signal Transduction
Target Names	LCP1

Image



Western Blot

Positive WB detected in: HL60 whole cell lysate, THP-1 whole cell lysate, K562 whole cell lysate, Jurkat whole cell lysate, HeLa whole cell lysate, NIH/3T3 whole cell lysate

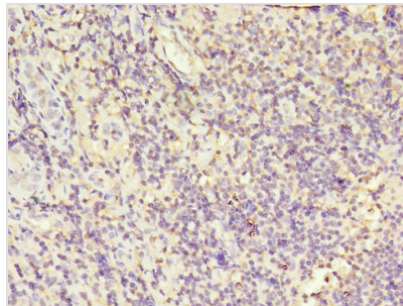
All lanes: LCP1 antibody at 8µg/ml

Secondary

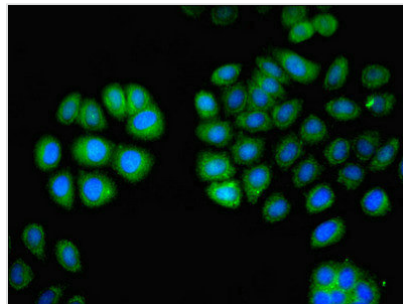
Goat polyclonal to rabbit IgG at 1/10000 dilution

Predicted band size: 71, 22 kDa

Observed band size: 71 kDa



Immunohistochemistry of paraffin-embedded human tonsil tissue using CSB-PA012824YA01HU at dilution of 1:100



Immunofluorescent analysis of A549 cells using CSB-PA012824YA01HU at dilution of 1:100 and Alexa Fluor 488-conjugated AffiniPure Goat Anti-Rabbit IgG(H+L)