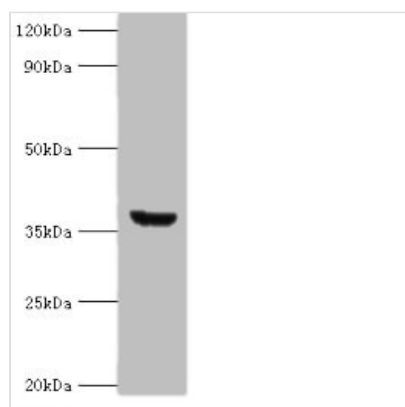




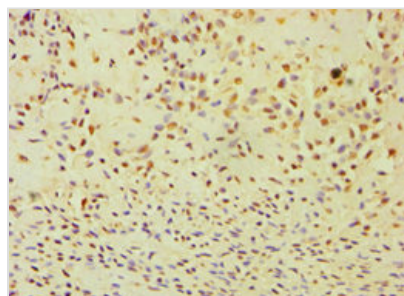
# ANXA8L1 Antibody

<b>Product Code</b>	CSB-PA726113ESR1HU
<b>Storage</b>	Upon receipt, store at -20°C or -80°C. Avoid repeated freeze.
<b>Uniprot No.</b>	Q5VT79
<b>Immunogen</b>	Recombinant Human Annexin A8-like protein 1 protein (1-276AA)
<b>Raised In</b>	Rabbit
<b>Species Reactivity</b>	Human
<b>Tested Applications</b>	ELISA, WB, IHC; Recommended dilution: WB:1:200-1:1000, IHC:1:20-1:200
<b>Form</b>	Liquid
<b>Conjugate</b>	Non-conjugated
<b>Storage Buffer</b>	PBS with 0.02% sodium azide, 50% glycerol, pH7.3.
<b>Purification Method</b>	Antigen Affinity Purified
<b>Isotype</b>	IgG
<b>Clonality</b>	Polyclonal
<b>Alias</b>	Annexin A8-like protein 1, ANXA8L1, ANXA8L2
<b>Immunogen Species</b>	Homo sapiens (Human)
<b>Research Area</b>	Others
<b>Target Names</b>	ANXA8L1

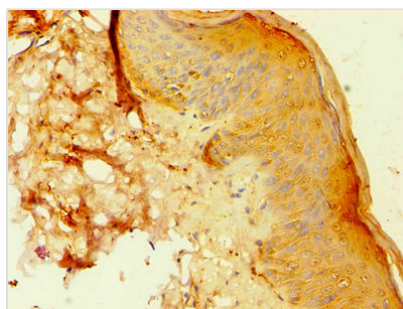
## Image



Western blot  
All lanes: ANXA8L2 antibody at 18μg/ml + HepG2 whole cell lysate  
Secondary  
Goat polyclonal to rabbit IgG at 1/10000 dilution  
Predicted band size: 37, 31 kDa  
Observed band size: 37 kDa



Immunohistochemistry of paraffin-embedded human breast cancer using CSB-PA726113ESR1HU at dilution of 1:100



Immunohistochemistry of paraffin-embedded human skin tissue using CSB-PA726113ESR1HU at dilution of 1:100