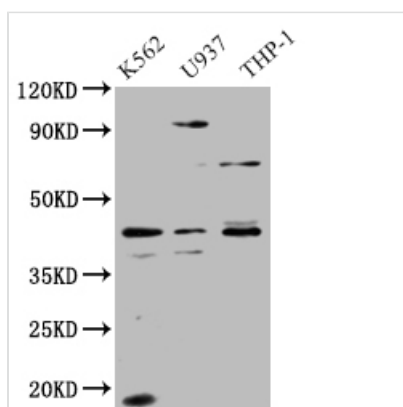




APOL1 Antibody

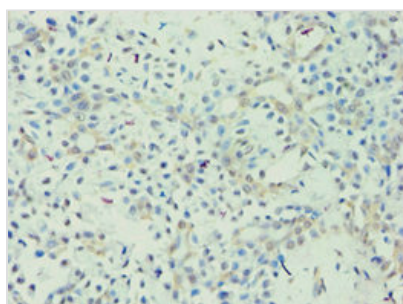
Product Code	CSB-PA001940ESR2HU
Storage	Upon receipt, store at -20°C or -80°C. Avoid repeated freeze.
Uniprot No.	O14791
Immunogen	Recombinant Human Apolipoprotein L1 protein (179-398AA)
Raised In	Rabbit
Species Reactivity	Human
Tested Applications	ELISA, WB, IHC; Recommended dilution: WB:1:500-1:2000, IHC:1:20-1:200
Form	Liquid
Conjugate	Non-conjugated
Storage Buffer	PBS with 0.02% sodium azide, 50% glycerol, pH7.3.
Purification Method	Antigen Affinity Purified
Isotype	IgG
Clonality	Polyclonal
Product Type	Polyclonal Antibody
Immunogen Species	Homo sapiens (Human)
Research Area	Cardiovascular
Target Names	APOL1

Image

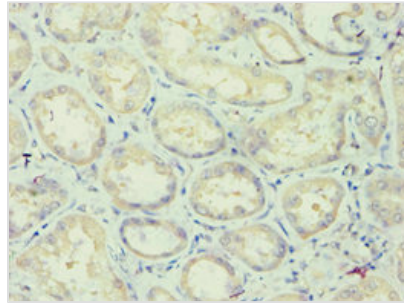


Western Blot

Positive WB detected in: K562 whole cell lysate, U937 whole cell lysate, THP-1 whole cell lysate
 All lanes: APOL1 antibody at 1:1000
 Secondary
 Goat polyclonal to rabbit IgG at 1/50000 dilution
 Predicted band size: 44, 46, 43 kDa
 Observed band size: 44 kDa



Immunohistochemistry of paraffin-embedded human breast cancer using CSB-PA001940ESR2HU at dilution of 1:100



Immunohistochemistry of paraffin-embedded human kidney tissue using CSB-PA001940ESR2HU at dilution of 1:100

Usage

For Research Use Only. Not for use in diagnostic or therapeutic procedures.