



ATP5F1 Antibody

Product Code	CSB-PA002358ESR1HU
Storage	Upon receipt, store at -20°C or -80°C. Avoid repeated freeze.
Uniprot No.	P24539
Immunogen	Recombinant Human ATP synthase F(0) complex subunit B1, mitochondrial protein (1-245AA)
Raised In	Rabbit
Species Reactivity	Human, Mouse
Tested Applications	ELISA, WB, IHC; Recommended dilution: WB:1:500-1:2000, IHC:1:20-1:200
Form	Liquid
Conjugate	Non-conjugated
Storage Buffer	PBS with 0.02% sodium azide, 50% glycerol, pH7.3.
Purification Method	Antigen Affinity Purified
Isotype	IgG
Clonality	Polyclonal
Alias	ATP synthase F(0) complex subunit B1, mitochondrial (ATP synthase proton-transporting mitochondrial F(0) complex subunit B1) (ATP synthase subunit b) (ATPase subunit b), ATP5F1
Immunogen Species	Homo sapiens (Human)
Research Area	Signal Transduction
Target Names	ATP5F1

Image



Western blot

All lanes: ATP synthase F (0) complex subunit B1, mitochondrial antibody at 4μg/ml

Lane 1: Mouse heart tissue

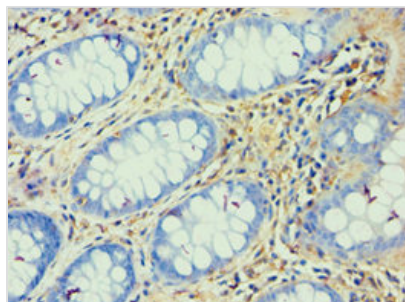
Lane 2: Mouse skeletal muscle tissue

Secondary

Goat polyclonal to rabbit IgG at 1/10000 dilution

Predicted band size: 29 kDa

Observed band size: 29 kDa



Immunohistochemistry of paraffin-embedded human colon cancer using CSB-PA002358ESR1HU at dilution of 1:100