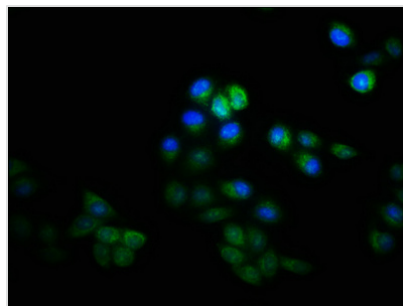




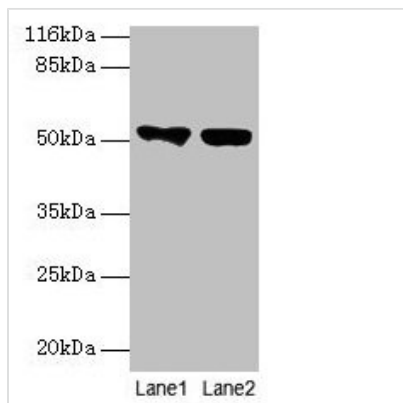
KRT8 Antibody

Product Code	CSB-PA11269A0Rb
Storage	Upon receipt, store at -20°C or -80°C. Avoid repeated freeze.
Uniprot No.	P05787
Immunogen	Recombinant Human Keratin, type II cytoskeletal 8 protein (2-483AA)
Raised In	Rabbit
Species Reactivity	Human
Tested Applications	ELISA, WB, IHC, IF; Recommended dilution: WB:1:1000-1:5000, IHC:1:20-1:200, IF:1:50-1:200
Form	Liquid
Conjugate	Non-conjugated
Storage Buffer	Preservative: 0.03% Proclin 300 Constituents: 50% Glycerol, 0.01M PBS, PH 7.4
Purification Method	>95%, Protein G purified
Isotype	IgG
Clonality	Polyclonal
Alias	Keratin, type II cytoskeletal 8 (Cytokeratin-8) (CK-8) (Keratin-8) (K8) (Type-II keratin Kb8), KRT8, CYK8
Immunogen Species	Homo sapiens (Human)
Research Area	Signal Transduction
Target Names	KRT8

Image



Immunofluorescence staining of HeLa cells with CSB-PA11269A0Rb at 1:133, counter-stained with DAPI. The cells were fixed in 4% formaldehyde, permeabilized using 0.2% Triton X-100 and blocked in 10% normal Goat Serum. The cells were then incubated with the antibody overnight at 4°C. The secondary antibody was Alexa Fluor 488-conjugated AffiniPure Goat Anti-Rabbit IgG(H+L).

**Western blot**All lanes: KRT8 antibody at 2 μ g/ml

Lane 1: A549 whole cell lysate

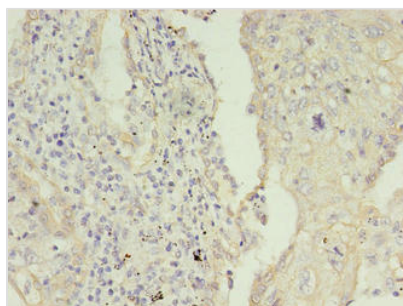
Lane 2: MCF-7 whole cell lysate

Secondary

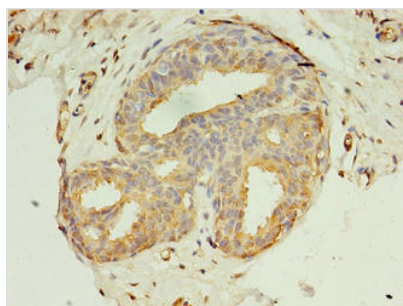
Goat polyclonal to rabbit IgG at 1/10000 dilution

Predicted band size: 54, 57 kDa

Observed band size: 54 kDa



Immunohistochemistry of paraffin-embedded human lung cancer using CSB-PA11269A0Rb at dilution of 1:100



Immunohistochemistry of paraffin-embedded human breast cancer using CSB-PA11269A0Rb at dilution of 1:100

Usage

For Research Use Only. Not for use in diagnostic or therapeutic procedures.