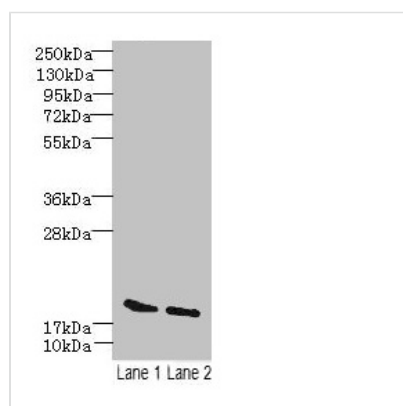




SKP1 Antibody

Product Code	CSB-PA021360LA01HU
Storage	Upon receipt, store at -20°C or -80°C. Avoid repeated freeze.
Uniprot No.	P63208
Immunogen	Recombinant Human S-phase kinase-associated protein 1 protein (2-163AA)
Raised In	Rabbit
Species Reactivity	Human, Mouse
Tested Applications	ELISA, WB; Recommended dilution: WB:1:1000-1:5000
Form	Liquid
Conjugate	Non-conjugated
Storage Buffer	Preservative: 0.03% Proclin 300 Constituents: 50% Glycerol, 0.01M PBS, PH 7.4
Purification Method	>95%, Protein G purified
Isotype	IgG
Clonality	Polyclonal
Alias	S-phase kinase-associated protein 1 (Cyclin-A/CDK2-associated protein p19) (p19A) (Organ of Corti protein 2) (OCP-2) (Organ of Corti protein II) (OCP-II) (RNA polymerase II elongation factor-like protein) (SIII) (Transcription elongation factor B polypeptide 1-like) (p19skp1), SKP1, EMC19 OCP2 SKP1A TCEB1L
Immunogen Species	Homo sapiens (Human)
Research Area	Cell Biology
Target Names	SKP1

Image



Western blot

All lanes: SKP1 antibody at 15µg/ml

Lane 1: Mouse brain tissue

Lane 2: Hela whole cell lysate

Secondary

Goat polyclonal to rabbit IgG at 1/10000 dilution

Predicted band size: 19 kDa

Observed band size: 19 kDa