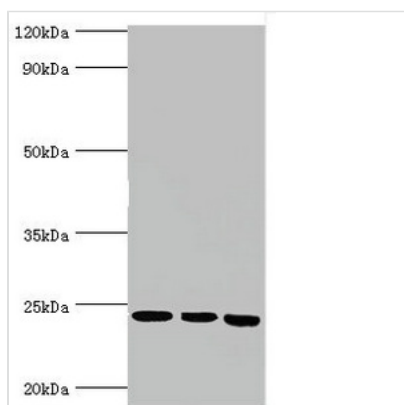




# BAG2 Antibody

<b>Product Code</b>	CSB-PA002530ESR1HU
<b>Storage</b>	Upon receipt, store at -20°C or -80°C. Avoid repeated freeze.
<b>Uniprot No.</b>	O95816
<b>Immunogen</b>	Recombinant Human BAG family molecular chaperone regulator 2 protein (1-211AA)
<b>Raised In</b>	Rabbit
<b>Species Reactivity</b>	Human
<b>Tested Applications</b>	ELISA, WB, IHC; Recommended dilution: WB:1:500-1:2000, IHC:1:20-1:200
<b>Form</b>	Liquid
<b>Conjugate</b>	Non-conjugated
<b>Storage Buffer</b>	PBS with 0.02% sodium azide, 50% glycerol, pH7.3.
<b>Purification Method</b>	Antigen Affinity Purified
<b>Isotype</b>	IgG
<b>Clonality</b>	Polyclonal
<b>Alias</b>	BAG family molecular chaperone regulator 2 (BAG-2) (Bcl-2-associated athanogene 2), BAG2
<b>Immunogen Species</b>	Homo sapiens (Human)
<b>Research Area</b>	Cell Biology
<b>Target Names</b>	BAG2

## Image



### Western blot

All lanes: BAG family molecular chaperone regulator 2 antibody at 6µg/ml

Lane 1: Jurkat whole cell lysate

Lane 2: HeLa whole cell lysate

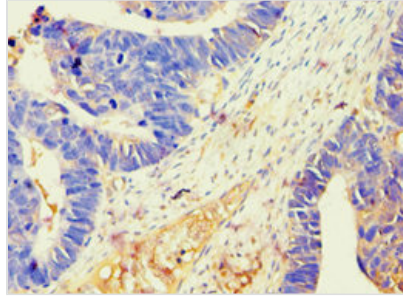
Lane 3: HepG2 whole cell lysate

Secondary

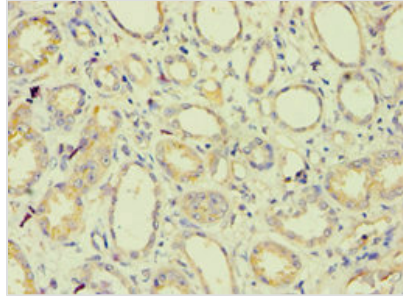
Goat polyclonal to rabbit IgG at 1/10000 dilution

Predicted band size: 24, 21 kDa

Observed band size: 24 kDa



Immunohistochemistry of paraffin-embedded human ovarian cancer using CSB-PA002530ESR1HU at dilution of 1:100



Immunohistochemistry of paraffin-embedded human kidney tissue using CSB-PA002530ESR1HU at dilution of 1:100