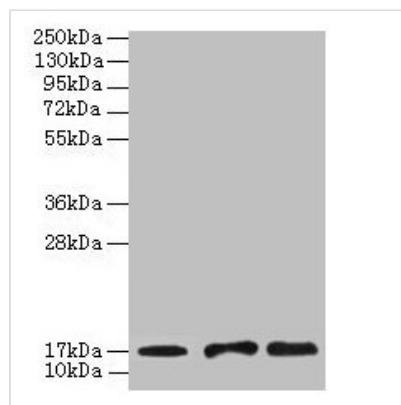




# UBE2D1 Antibody

<b>Product Code</b>	CSB-PA025443DA01HU
<b>Storage</b>	Upon receipt, store at -20°C or -80°C. Avoid repeated freeze.
<b>Uniprot No.</b>	P51668
<b>Immunogen</b>	Recombinant Human Ubiquitin-conjugating enzyme E2 D1 protein (1-147AA)
<b>Raised In</b>	Rabbit
<b>Species Reactivity</b>	Human, Mouse
<b>Tested Applications</b>	ELISA, WB, IHC; Recommended dilution: WB:1:500-1:5000, IHC:1:20-1:200
<b>Form</b>	Liquid
<b>Conjugate</b>	Non-conjugated
<b>Storage Buffer</b>	Preservative: 0.03% Proclin 300 Constituents: 50% Glycerol, 0.01M PBS, PH 7.4
<b>Purification Method</b>	>95%, Protein G purified
<b>Isotype</b>	IgG
<b>Clonality</b>	Polyclonal
<b>Alias</b>	Ubiquitin-conjugating enzyme E2 D1 (EC 2.3.2.23) ((E3-independent) E2 ubiquitin-conjugating enzyme D1) (EC 2.3.2.24) (E2 ubiquitin-conjugating enzyme D1) (Stimulator of Fe transport) (SFT) (UBC4/5 homolog) (UbcH5) (Ubiquitin carrier protein D1) (Ubiquitin-conjugating enzyme E2(17)KB 1) (Ubiquitin-conjugating enzyme E2-17 kDa 1) (Ubiquitin-protein ligase D1), UBE2D1, SFT UBC5A UBCH5 UBCH5A
<b>Immunogen Species</b>	Homo sapiens (Human)
<b>Research Area</b>	Epigenetics and Nuclear Signaling
<b>Target Names</b>	UBE2D1

## Image



### Western blot

All lanes: UBE2D1 antibody at 2µg/ml

Lane 1: Mouse thymus tissue

Lane 2: NIH/3T3 whole cell lysate

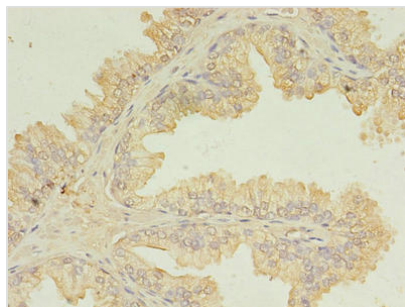
Lane 3: Jurkat whole cell lysate

Secondary

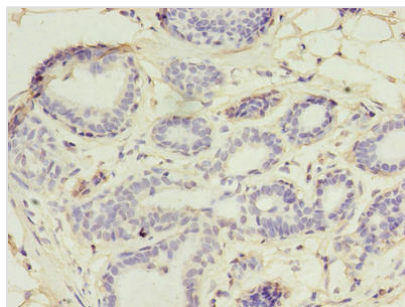
Goat polyclonal to rabbit IgG at 1/10000 dilution

Predicted band size: 17 kDa

Observed band size: 17 kDa



Immunohistochemistry of paraffin-embedded human prostate cancer using CSB-PA025443DA01HU at dilution of 1:100



Immunohistochemistry of paraffin-embedded human breast cancer using CSB-PA025443DA01HU at dilution of 1:100

## Usage

For Research Use Only. Not for use in diagnostic or therapeutic procedures.