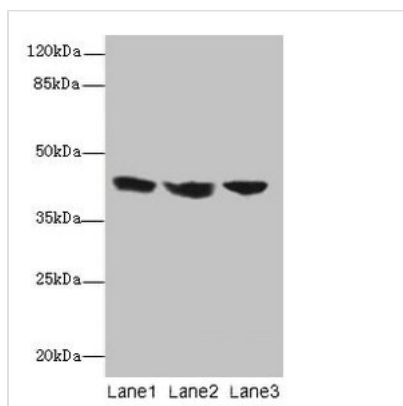




# IL2RG Antibody

<b>Product Code</b>	CSB-PA011651EA01HU
<b>Storage</b>	Upon receipt, store at -20°C or -80°C. Avoid repeated freeze.
<b>Uniprot No.</b>	P31785
<b>Immunogen</b>	Recombinant Human Cytokine receptor common subunit gamma protein (75-230AA)
<b>Raised In</b>	Rabbit
<b>Species Reactivity</b>	Human
<b>Tested Applications</b>	ELISA, WB, IHC; Recommended dilution: WB:1:500-1:5000, IHC:1:20-1:200
<b>Form</b>	Liquid
<b>Conjugate</b>	Non-conjugated
<b>Storage Buffer</b>	Preservative: 0.03% Proclin 300 Constituents: 50% Glycerol, 0.01M PBS, PH 7.4
<b>Purification Method</b>	>95%, Protein G purified
<b>Isotype</b>	IgG
<b>Clonality</b>	Polyclonal
<b>Alias</b>	Cytokine receptor common subunit gamma (Interleukin-2 receptor subunit gamma) (IL-2 receptor subunit gamma) (IL-2R subunit gamma) (IL-2RG) (gammaC) (p64) (CD antigen CD132), IL2RG
<b>Immunogen Species</b>	Homo sapiens (Human)
<b>Research Area</b>	Immunology
<b>Target Names</b>	IL2RG

## Image



### Western blot

All lanes: IL2RG antibody at 12µg/ml

Lane 1: Jurkat whole cell lysate

Lane 2: K562 whole cell lysate

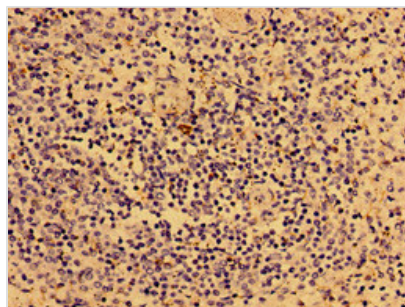
Lane 3: HL60 whole cell lysate

Secondary

Goat polyclonal to rabbit IgG at 1/10000 dilution

Predicted band size: 43, 21 kDa

Observed band size: 43 kDa



Immunohistochemistry of paraffin-embedded human spleen tissue using CSB-PA011651EA01HU at dilution of 1:100

---

**Usage**

For Research Use Only. Not for use in diagnostic or therapeutic procedures.