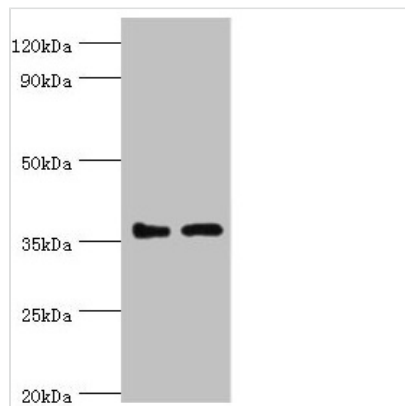




BRCC3 Antibody

Product Code	CSB-PA002798ESR2HU
Storage	Upon receipt, store at -20°C or -80°C. Avoid repeated freeze.
Uniprot No.	P46736
Immunogen	Recombinant Human Lys-63-specific deubiquitinase BRCC36 protein (1-316AA)
Raised In	Rabbit
Species Reactivity	Human
Tested Applications	ELISA, WB, IHC; Recommended dilution: WB:1:500-1:2000, IHC:1:20-1:200
Form	Liquid
Conjugate	Non-conjugated
Storage Buffer	PBS with 0.02% sodium azide, 50% glycerol, pH7.3.
Purification Method	Antigen Affinity Purified
Isotype	IgG
Clonality	Polyclonal
Alias	Lys-63-specific deubiquitinase BRCC36 (EC 3.4.19.-) (BRCA1-A complex subunit BRCC36) (BRCA1/BRCA2-containing complex subunit 3) (BRCA1/BRCA2-containing complex subunit 36) (BRISC complex subunit BRCC36), BRCC3, BRCC36 C6.1A CXorf53
Immunogen Species	Homo sapiens (Human)
Research Area	Cell Biology
Target Names	BRCC3

Image



Western blot

All lanes: BRCC3 antibody at 3μg/ml

Lane 1: 293T whole cell lysate

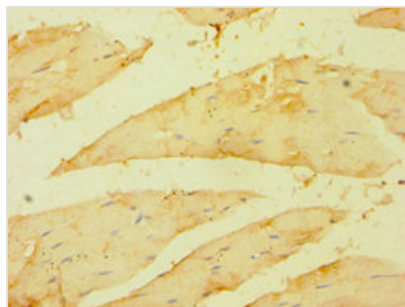
Lane 2: MCF-7 whole cell lysate

Secondary

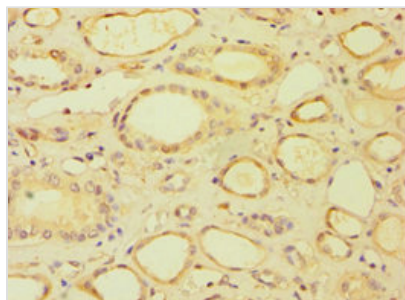
Goat polyclonal to rabbit IgG at 1/10000 dilution

Predicted band size: 37, 34, 24, 29 kDa

Observed band size: 37 kDa



Immunohistochemistry of paraffin-embedded human skeletal muscle tissue using CSB-PA002798ESR2HU at dilution of 1:100



Immunohistochemistry of paraffin-embedded human kidney tissue using CSB-PA002798ESR2HU at dilution of 1:100