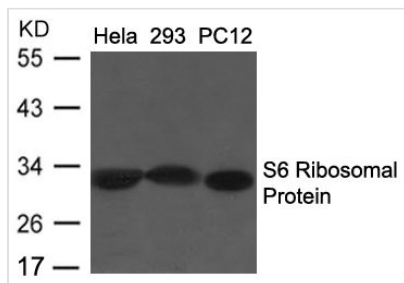




RPS6 (Ab-235/236) Antibody

Product Code	CSB-PA833207
Storage	Upon receipt, store at -20°C or -80°C. Avoid repeated freeze.
Uniprot No.	P62753
Immunogen	Peptide sequence around aa.233-238(R-L-S-S-L-R) derived from Human S6 Ribosomal Protein.
Raised In	Rabbit
Species Reactivity	Human,Mouse,Rat
Specificity	The antibody detects endogenous level of total S6 Ribosomal protein.
Tested Applications	ELISA,WB;WB:1:500-1:1000
Clonality	Polyclonal
Alias	NP33, RPS6, RS6
Product Type	Polyclonal Antibody
Immunogen Species	Homo sapiens (Human)
Target Names	RPS6

Image



Western blot analysis of extracts from HeLa, 293 and PC12 cells using S6 Ribosomal Protein (Ab-235/236) Antibody.

Usage For Research Use Only. Not for use in diagnostic or therapeutic procedures.