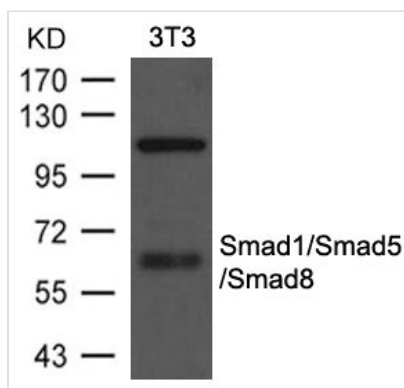




# SMAD1 Antibody

<b>Product Code</b>	CSB-PA825094
<b>Storage</b>	Upon receipt, store at -20°C or -80°C. Avoid repeated freeze.
<b>Uniprot No.</b>	Q15797
<b>Immunogen</b>	Peptide sequence around aa.461-465(I-S-S-V-S) derived from Human Smad1. This sequence has the same homology in Smad5 and Smad8.
<b>Raised In</b>	Rabbit
<b>Species Reactivity</b>	Human,Mouse,Rat
<b>Specificity</b>	The antibody detects endogenous level of total Smad1, Smad5, Smad8 protein.
<b>Tested Applications</b>	ELISA,WB;WB:1:500-1:1000
<b>Clonality</b>	Polyclonal
<b>Alias</b>	Mad-related protein 1, SMAD 1, hSMAD1, Transforming growth factor-beta-signaling protein 1
<b>Product Type</b>	Polyclonal Antibody
<b>Immunogen Species</b>	Homo sapiens (Human)
<b>Target Names</b>	SMAD1

## Image



Western blot analysis of extracts from 3T3 cells using Smad1/Smad5/Smad8 Antibody.

## Usage

For Research Use Only. Not for use in diagnostic or therapeutic procedures.