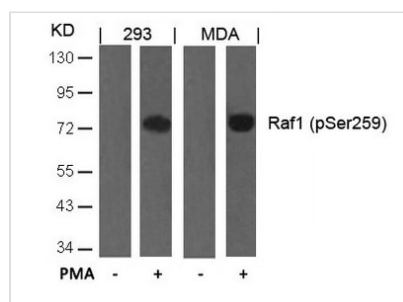




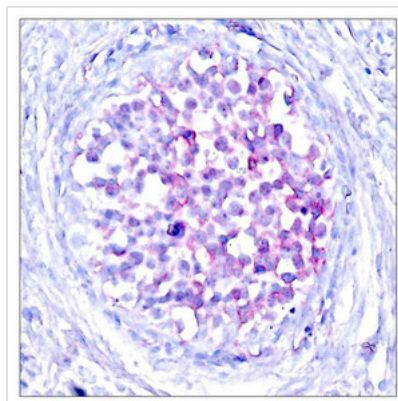
Phospho-RAF1 (Ser259) Antibody

Product Code	CSB-PA291059
Storage	Upon receipt, store at -20°C or -80°C. Avoid repeated freeze.
Uniprot No.	P04049
Immunogen	Peptide sequence around phosphorylation site of serine 259 (S-T-S(p)-T-P) derived from Human Raf1.
Raised In	Rabbit
Species Reactivity	Human,Mouse,Rat
Specificity	The antibody detects endogenous level of Raf-1 only when phosphorylated at serine 259.
Tested Applications	ELISA,WB,IHC;WB:1:500-1:1000,IHC:1:50-1:100
Form	Supplied at 1.0mg/mL in phosphate buffered saline (without Mg ²⁺ and Ca ²⁺), pH 7.4, 150mM NaCl, 0.02% sodium azide and 50% glycerol.
Purification Method	Antibodies were produced by immunizing rabbits with synthetic phosphopeptide and KLH conjugates. Antibodies were purified by affinity-chromatography using epitope-specific phosphopeptide. Non-phospho specific antibodies were removed by chromatography usi
Clonality	Polyclonal
Alias	C-RAF; C-Raf; CRAF
Product Type	Polyclonal Antibody
Immunogen Species	Homo sapiens (Human)
Target Names	RAF1

Image



Western blot analysis of extracts from 293 and MDA cells untreated or treated with PMA using Raf1(Phospho-Ser259) Antibody.



Immunohistochemical analysis of paraffin-embedded human breast carcinoma tissue using Raf1(Phospho-Ser259) Antibody.

Product Modify

Phospho-Ser259

Usage

For Research Use Only. Not for use in diagnostic or therapeutic procedures.