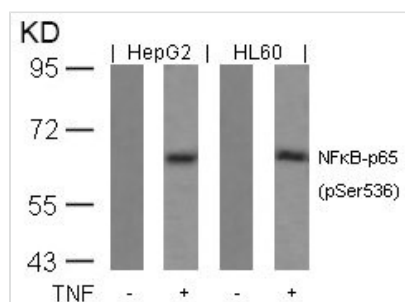




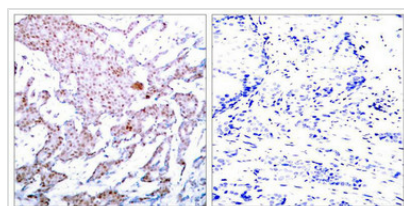
Phospho-RELA (Ser536) Antibody

Product Code	CSB-PA898650
Storage	Upon receipt, store at -20°C or -80°C. Avoid repeated freeze.
Uniprot No.	Q04206
Immunogen	Peptide sequence around phosphorylation site of serine 536 (F-S-S(p)-I-A) derived from Human NFκB-p65.
Raised In	Rabbit
Species Reactivity	Human, Mouse, Rat
Specificity	The antibody detects endogenous level of NF-κB p65 only when phosphorylated at serine 536.
Tested Applications	ELISA, WB, IHC, IF; WB: 1:500-1:1000, IHC: 1:50-1:100, IF: 1:100-1:200
Form	Supplied at 1.0mg/mL in phosphate buffered saline (without Mg ²⁺ and Ca ²⁺), pH 7.4, 150mM NaCl, 0.02% sodium azide and 50% glycerol.
Purification Method	Antibodies were produced by immunizing rabbits with synthetic phosphopeptide and KLH conjugates. Antibodies were purified by affinity-chromatography using epitope-specific phosphopeptide. Non-phospho specific antibodies were removed by chromatography use
Clonality	Polyclonal
Alias	NFKB3; RELA; TF65; Transcription factor p65; p65
Product Type	Polyclonal Antibody
Immunogen Species	Homo sapiens (Human)
Target Names	RELA

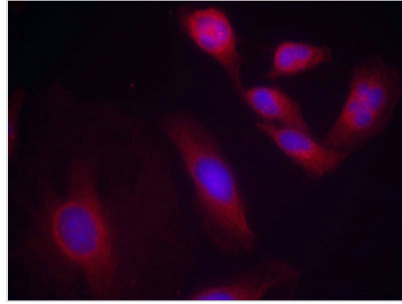
Image



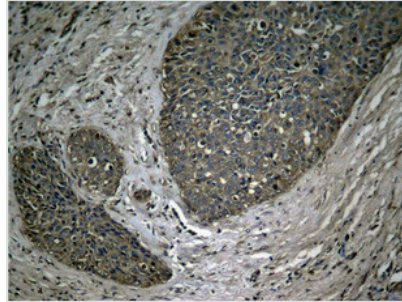
Western blot analysis of extracts from HepG2 and HL60 cells untreated or treated with TNF using NFκB-p65(Phospho-Ser536) Antibody.



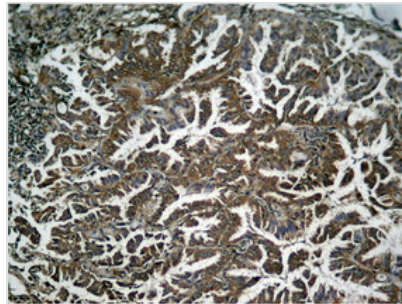
Immunohistochemical analysis of paraffin-embedded human breast carcinoma tissue using NFκB-p65 (Phospho-Ser536) Antibody (left) or the same antibody preincubated with blocking peptide (right).



Immunofluorescence staining of methanol-fixed HeLa cells using NFκB-p65(Phospho-Ser536) Antibody.



Immunohistochemical analysis of paraffin-embedded human breast carcinoma tissue using NFκB-p65 (Phospho-Ser536) Antibody.



Immunohistochemical analysis of paraffin-embedded human Lung carcinoma tissue using NFκB-p65 (Phospho-Ser536) Antibody.

Product Modify

Phospho-Ser536

Usage

For Research Use Only. Not for use in diagnostic or therapeutic procedures.