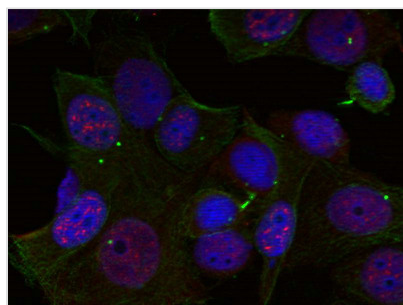




# Phospho-REL (Ser503) Antibody

<b>Product Code</b>	CSB-PA299508
<b>Storage</b>	Upon receipt, store at -20°C or -80°C. Avoid repeated freeze.
<b>Uniprot No.</b>	Q04864
<b>Immunogen</b>	Peptide sequence around phosphorylation site of serine 503 (T-S-S(p)-D-S) derived from Human Rel.
<b>Raised In</b>	Rabbit
<b>Species Reactivity</b>	Human
<b>Specificity</b>	The antibody detects endogenous level of Rel only when phosphorylated at serine 503.
<b>Tested Applications</b>	ELISA,IF;IF:1:100-1:200
<b>Form</b>	Supplied at 1.0mg/mL in phosphate buffered saline (without Mg <sup>2+</sup> and Ca <sup>2+</sup> ), pH 7.4, 150mM NaCl, 0.02% sodium azide and 50% glycerol.
<b>Purification Method</b>	Antibodies were produced by immunizing rabbits with synthetic phosphopeptide and KLH conjugates. Antibodies were purified by affinity-chromatography using epitope-specific phosphopeptide. Non-phospho specific antibodies were removed by chromatography using
<b>Clonality</b>	Polyclonal
<b>Alias</b>	C-Rel
<b>Product Type</b>	Polyclonal Antibody
<b>Immunogen Species</b>	Homo sapiens (Human)
<b>Target Names</b>	REL

## Image



Immunofluorescence staining of methanol-fixed Hela cells using Rel(Phospho-Ser503) Antibody.

**Product Modify** Phospho-Ser503