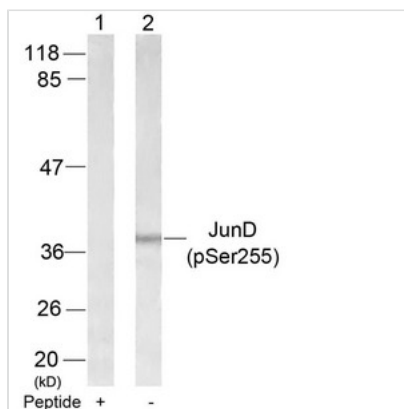




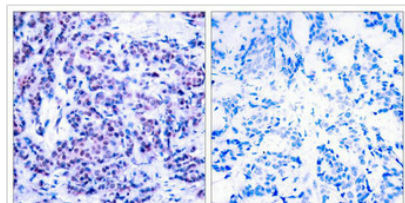
Phospho-JUND (Ser255) Antibody

Product Code	CSB-PA843368
Storage	Upon receipt, store at -20°C or -80°C. Avoid repeated freeze.
Uniprot No.	P17535
Immunogen	Peptide sequence around phosphorylation site of serine 255 (G-E-S(p)-P-P) derived from Human JunD.
Raised In	Rabbit
Species Reactivity	Human,Mouse,Rat
Specificity	The antibody detects endogenous level of JunD only when phosphorylated at serine 255.
Tested Applications	ELISA,WB,IHC;WB:1:500-1:1000,IHC:1:50-1:100
Form	Supplied at 1.0mg/mL in phosphate buffered saline (without Mg ²⁺ and Ca ²⁺), pH 7.4, 150mM NaCl, 0.02% sodium azide and 50% glycerol.
Purification Method	Antibodies were produced by immunizing rabbits with synthetic phosphopeptide and KLH conjugates. Antibodies were purified by affinity-chromatography using epitope-specific phosphopeptide. Non-phospho specific antibodies were removed by chromatography usi
Clonality	Polyclonal
Alias	AP-1
Product Type	Polyclonal Antibody
Immunogen Species	Homo sapiens (Human)
Target Names	JUND

Image



Western blot analysis of extracts from 293 cells using JunD(Phospho-Ser255) Antibody(Lane 2) and the same antibody preincubated with blocking peptide(Lane1).



Immunohistochemical analysis of paraffin-embedded human breast carcinoma tissue using JunD(Phospho-Ser255) Antibody(left) or the same antibody preincubated with blocking peptide(right).



Product Modify

Phospho-Ser255

Usage

For Research Use Only. Not for use in diagnostic or therapeutic procedures.