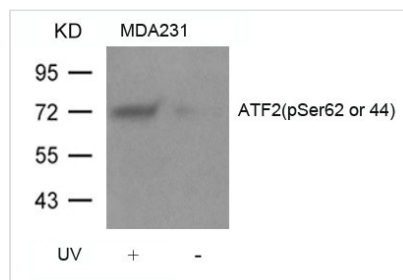




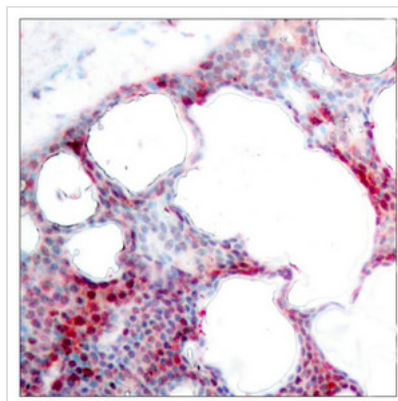
Phospho-ATF2 (Ser62 or 44) Antibody

Product Code	CSB-PA011081
Storage	Upon receipt, store at -20°C or -80°C. Avoid repeated freeze.
Uniprot No.	P15336
Immunogen	Peptide sequence around phosphorylation site of serine 62 or 44 (N-D-S(p)-V-I) derived from Human ATF2.
Raised In	Rabbit
Species Reactivity	Human,Mouse,Rat
Specificity	The antibody detects endogenous level of ATF-2 only when phosphorylated at serine 62 or 44.
Tested Applications	ELISA,WB,IHC;WB:1:500-1:1000,IHC:1:50-1:100
Form	Supplied at 1.0mg/mL in phosphate buffered saline (without Mg ²⁺ and Ca ²⁺), pH 7.4, 150mM NaCl, 0.02% sodium azide and 50% glycerol.
Purification Method	Antibodies were produced by immunizing rabbits with synthetic phosphopeptide and KLH conjugates. Antibodies were purified by affinity-chromatography using epitope-specific phosphopeptide. Non-phospho specific antibodies were removed by chromatography usi
Clonality	Polyclonal
Alias	CREB2; CREBP1;
Product Type	Polyclonal Antibody
Immunogen Species	Homo sapiens (Human)
Target Names	ATF2

Image



Western blot analysis of extracts from MDA231 cells untreated or treated with UV using ATF2(Phospho-Ser62 or 44) Antibody.



Immunohistochemical analysis of paraffin-embedded human breast carcinoma tissue using ATF2(Phospho-Ser62 or 44) Antibody.

Product Modify

Phospho-Ser62 or 44

Usage

For Research Use Only. Not for use in diagnostic or therapeutic procedures.