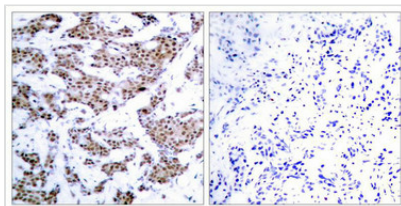




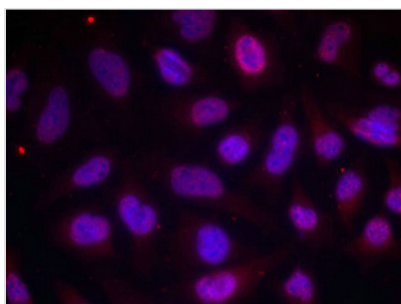
Phospho-MEF2A (Thr312) Antibody

Product Code	CSB-PA024919
Storage	Upon receipt, store at -20°C or -80°C. Avoid repeated freeze.
Uniprot No.	Q02078
Immunogen	Peptide sequence around phosphorylation site of threonine 312 (L-A-T(p)-P-V) derived from Human MEF2A.
Raised In	Rabbit
Species Reactivity	Human,Mouse,Rat
Specificity	The antibody detects endogenous level of MEF2A only when phosphorylated at threonine 312.
Tested Applications	ELISA,WB,IHC,IF;WB:1:500-1:1000,IHC:1:50-1:100,IF:1:100-1:200
Form	Supplied at 1.0mg/mL in phosphate buffered saline (without Mg ²⁺ and Ca ²⁺), pH 7.4, 150mM NaCl, 0.02% sodium azide and 50% glycerol.
Purification Method	Antibodies were produced by immunizing rabbits with synthetic phosphopeptide and KLH conjugates. Antibodies were purified by affinity-chromatography using epitope-specific phosphopeptide. Non-phospho specific antibodies were removed by chromatography
Clonality	Polyclonal
Alias	MEF2, ADCAD1, RSRFC4, RSRFC9
Product Type	Polyclonal Antibody
Immunogen Species	Homo sapiens (Human)
Target Names	MEF2A

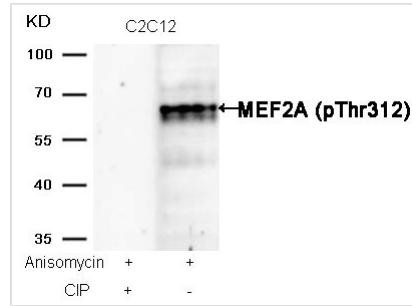
Image



Immunohistochemical analysis of paraffin-embedded human breast carcinoma tissue using MEF2A(Phospho-Thr312) Antibody(left) or the same antibody preincubated with blocking peptide(right).



Immunofluorescence staining of methanol-fixed HeLa cells using MEF2A(Phospho-Thr312) Antibody.



Western blot analysis of extracts from C2C12 cells, treated with Anisomycin or calf intestinal phosphatase (CIP), using MEF2A (Phospho-Thr312) Antibody.

Product Modify

Phospho-Thr312

Usage

For Research Use Only. Not for use in diagnostic or therapeutic procedures.