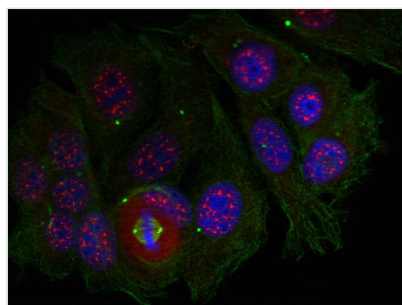




# Phospho-MEF2A (Thr319) Antibody

<b>Product Code</b>	CSB-PA956856
<b>Storage</b>	Upon receipt, store at -20°C or -80°C. Avoid repeated freeze.
<b>Uniprot No.</b>	Q02078
<b>Immunogen</b>	Peptide sequence around phosphorylation site of Thr319 (V-T-T(p)-P-S) derived from Human MEF2A.
<b>Raised In</b>	Rabbit
<b>Species Reactivity</b>	Human,Mouse,Rat
<b>Specificity</b>	The antibody detects endogenous level of MEF2A only when phosphorylated at Thr319.
<b>Tested Applications</b>	ELISA,IF;IF:1:100-1:200
<b>Form</b>	Supplied at 1.0mg/mL in phosphate buffered saline (without Mg <sup>2+</sup> and Ca <sup>2+</sup> ), pH 7.4, 150mM NaCl, 0.02% sodium azide and 50% glycerol.
<b>Purification Method</b>	Antibodies were produced by immunizing rabbits with synthetic phosphopeptide and KLH conjugates. Antibodies were purified by affinity-chromatography using epitope-specific phosphopeptide. Non-phospho specific antibodies were removed by chromatography
<b>Clonality</b>	Polyclonal
<b>Alias</b>	MEF2; Serum response factor-like protein 1;
<b>Product Type</b>	Polyclonal Antibody
<b>Immunogen Species</b>	Homo sapiens (Human)
<b>Target Names</b>	MEF2A

## Image



Immunofluorescence staining of methanol-fixed Hela cells using MEF2A(Phospho-Thr319) Antibody.

<b>Product Modify</b>	Phospho-Thr319
-----------------------	----------------