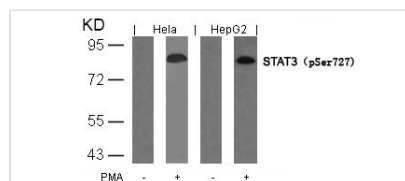




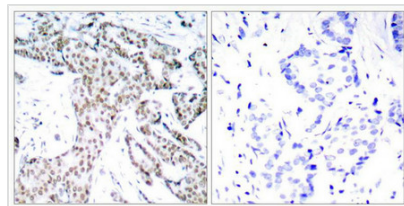
Phospho-STAT3 (Ser727) Antibody

Product Code	CSB-PA699573
Storage	Upon receipt, store at -20°C or -80°C. Avoid repeated freeze.
Uniprot No.	P40763
Immunogen	Peptide sequence around phosphorylation site of serine 727 (P-M-S(p)-P-R) derived from Human STAT3.
Raised In	Rabbit
Species Reactivity	Human,Mouse,Rat
Specificity	The antibody detects endogenous level of STAT3 only when phosphorylated at serine 727.
Tested Applications	ELISA,WB,IHC,IF;WB:1:500-1:1000,IHC:1:50-1:100,IF:1:100-1:200
Form	Supplied at 1.0mg/mL in phosphate buffered saline (without Mg ²⁺ and Ca ²⁺), pH 7.4, 150mM NaCl, 0.02% sodium azide and 50% glycerol.
Purification Method	Antibodies were produced by immunizing rabbits with synthetic phosphopeptide and KLH conjugates. Antibodies were purified by affinity-chromatography using epitope-specific phosphopeptide. Non-phospho specific antibodies were removed by chromatography
Clonality	Polyclonal
Alias	APRF, HIES
Product Type	Polyclonal Antibody
Immunogen Species	Homo sapiens (Human)
Target Names	STAT3

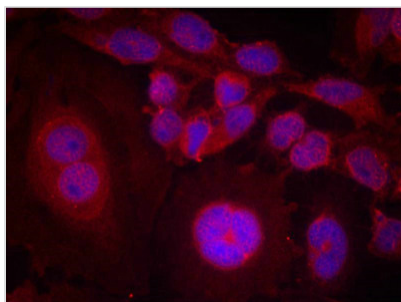
Image



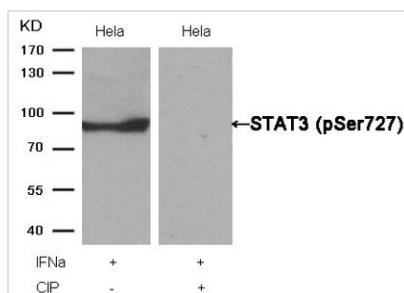
Western blot analysis of extracts from HeLa and HepG2 cells untreated or treated with PMA using STAT3(Phospho-Ser727) Antibody.



Immunohistochemical analysis of paraffin-embedded human breast carcinoma tissue using STAT3(Phospho-Ser727) Antibody(left) or the same antibody preincubated with blocking peptide(right).



Immunofluorescence staining of methanol-fixed HeLa cells using STAT3(Phospho-Ser727) Antibody.



Western blot analysis of extracts from HeLa cells, treated with IFNa or calf intestinal phosphatase (CIP), using STAT3 (Phospho-Ser727) Antibody.

Product Modify

Phospho-Ser727