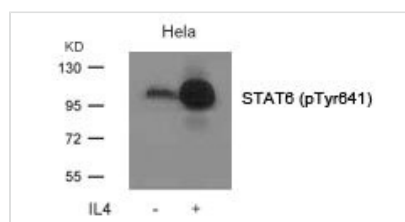




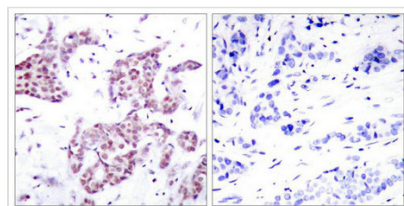
Phospho-STAT6 (Tyr641) Antibody

Product Code	CSB-PA073316
Storage	Upon receipt, store at -20°C or -80°C. Avoid repeated freeze.
Uniprot No.	P42226
Immunogen	Peptide sequence around phosphorylation site of Tyrosine 641 (R-G-Y(p)-V-P) derived from Human STAT6.
Raised In	Rabbit
Species Reactivity	Human
Specificity	The antibody detects endogenous level of STAT6 only when phosphorylated at tyrosine 641.
Tested Applications	ELISA,WB,IHC;WB:1:500-1:1000,IHC:1:50-1:100
Form	Supplied at 1.0mg/mL in phosphate buffered saline (without Mg ²⁺ and Ca ²⁺), pH 7.4, 150mM NaCl, 0.02% sodium azide and 50% glycerol.
Purification Method	Antibodies were produced by immunizing rabbits with synthetic phosphopeptide and KLH conjugates. Antibodies were purified by affinity-chromatography using epitope-specific phosphopeptide. Non-phospho specific antibodies were removed by chromatography usi
Clonality	Polyclonal
Alias	IL-4 Stat
Product Type	Polyclonal Antibody
Immunogen Species	Homo sapiens (Human)
Target Names	STAT6

Image



Western blot analysis of extracts from HeLa cells untreated or treated with IL-4 using STAT6(Phospho-Tyr641) Antibody.



Immunohistochemical analysis of paraffin-embedded human breast carcinoma tissue using STAT6(Phospho-Tyr641) Antibody(left) or the same antibody preincubated with blocking peptide(right).

Product Modify	Phospho-Tyr641
Usage	For Research Use Only. Not for use in diagnostic or therapeutic procedures.