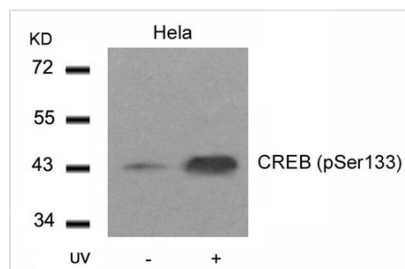




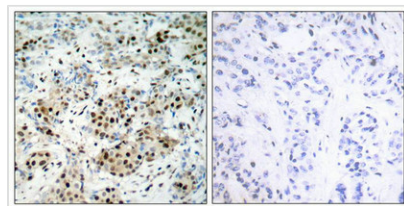
# Phospho-CREB1 (Ser133) Antibody

<b>Product Code</b>	CSB-PA935267
<b>Storage</b>	Upon receipt, store at -20°C or -80°C. Avoid repeated freeze.
<b>Uniprot No.</b>	P16220
<b>Immunogen</b>	Peptide sequence around phosphorylation site of serine 133 (R-P-S(p)-Y-R) derived from Human CREB.
<b>Raised In</b>	Rabbit
<b>Species Reactivity</b>	Human,Mouse,Rat
<b>Specificity</b>	The antibody detects endogenous level of CREB only when phosphorylated at serine 133.
<b>Tested Applications</b>	ELISA,WB,IHC;WB:1:500-1:1000,IHC:1:50-1:100
<b>Form</b>	Supplied at 1.0mg/mL in phosphate buffered saline (without Mg <sup>2+</sup> and Ca <sup>2+</sup> ), pH 7.4, 150mM NaCl, 0.02% sodium azide and 50% glycerol.
<b>Purification Method</b>	Antibodies were produced by immunizing rabbits with synthetic phosphopeptide and KLH conjugates. Antibodies were purified by affinity-chromatography using epitope-specific phosphopeptide. Non-phospho specific antibodies were removed by chromatography
<b>Clonality</b>	Polyclonal
<b>Alias</b>	CREB-1; CREB1;
<b>Product Type</b>	Polyclonal Antibody
<b>Immunogen Species</b>	Homo sapiens (Human)
<b>Target Names</b>	CREB1

## Image



Western blot analysis of extracts from HeLa cells untreated or treated with UV using CREB(Phospho-Ser133) Antibody.



Immunohistochemical analysis of paraffin-embedded human breast carcinoma tissue using CREB(Phospho-Ser133) Antibody(left) or the same antibody preincubated with blocking peptide(right).

<b>Product Modify</b>	Phospho-Ser133
-----------------------	----------------