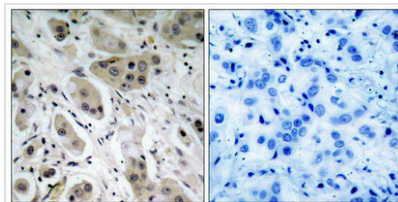




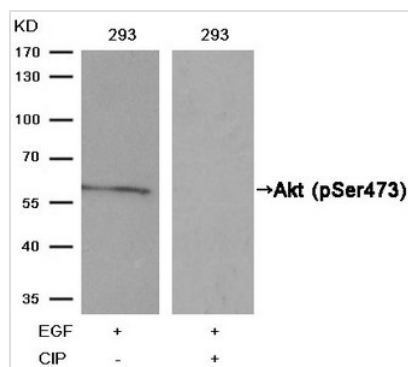
# Phospho-AKT1 (Ser473) Antibody

<b>Product Code</b>	CSB-PA573922
<b>Storage</b>	Upon receipt, store at -20°C or -80°C. Avoid repeated freeze.
<b>Uniprot No.</b>	P31749
<b>Immunogen</b>	Peptide sequence around phosphorylation site of serine 473 (Q-F-S(p)-Y-S) derived from Human Akt.
<b>Raised In</b>	Rabbit
<b>Species Reactivity</b>	Human,Mouse,Rat
<b>Specificity</b>	The antibody detects endogenous level of Akt only when phosphorylated at serine 473.
<b>Tested Applications</b>	ELISA,WB,IHC;WB:1:500-1:1000,IHC:1:50-1:100
<b>Form</b>	Supplied at 1.0mg/mL in phosphate buffered saline (without Mg <sup>2+</sup> and Ca <sup>2+</sup> ), pH 7.4, 150mM NaCl, 0.02% sodium azide and 50% glycerol.
<b>Purification Method</b>	Antibodies were produced by immunizing rabbits with synthetic phosphopeptide and KLH conjugates. Antibodies were purified by affinity-chromatography using epitope-specific phosphopeptide. Non-phospho specific antibodies were removed by chromatography usi
<b>Clonality</b>	Polyclonal
<b>Alias</b>	C-AKT; PKB; PKB-alpha; RAC; RAC-PK-alpha;akt s473;akt 473;akt ser473 antibody
<b>Product Type</b>	Polyclonal Antibody
<b>Immunogen Species</b>	Homo sapiens (Human)
<b>Target Names</b>	AKT1

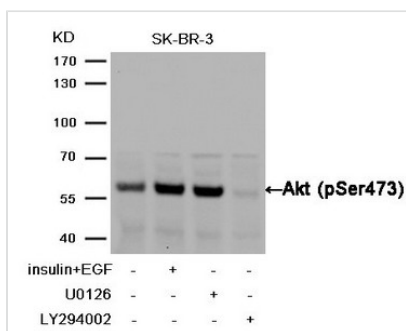
## Image



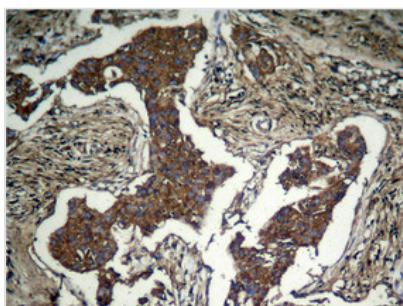
Immunohistochemical analysis of paraffin-embedded human breast carcinoma tissue using Akt(Phospho-Ser473) Antibody(left) or the same antibody preincubated with blocking peptide(right).



Western blot analysis of extracts from 293 cells, treated with EGF or calf intestinal phosphatase (CIP), using Akt(Phospho-Ser473) Antibody.



Western blot analysis of extracts from SK-BR-3 cells, treated with insulin and EGF, and pretreated with U0126 and LY294002 cells using Akt (Phospho-Ser473) Antibody.



Immunohistochemical analysis of paraffin-embedded human Lung carcinoma tissue using Akt (Phospho-Ser473) Antibody.

**Product Modify**

Phospho-Ser473

**Usage**

For Research Use Only. Not for use in diagnostic or therapeutic procedures.