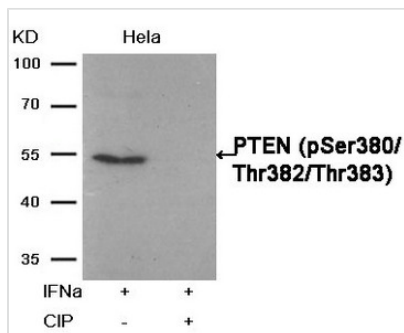




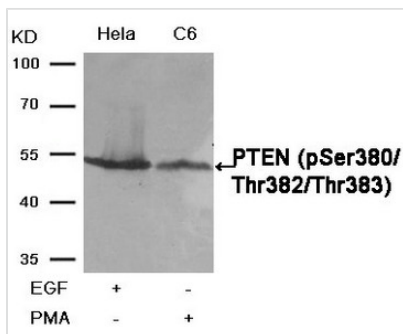
Phospho-PTEN (Ser380/Thr382/Thr383) Antibody

Product Code	CSB-PA909192
Storage	Upon receipt, store at -20°C or -80°C. Avoid repeated freeze.
Uniprot No.	P60484
Immunogen	Peptide sequence around phosphorylation site of threonine 380/382/383 (R-Y-S(p)-D-T(p)-T(p)-D-S) derived from Human PTEN.
Raised In	Rabbit
Species Reactivity	Human,Mouse,Rat
Specificity	The antibody detects endogenous level of PTEN only when phosphorylated at serine 380 and threonine 382/383.
Tested Applications	ELISA,WB,IHC,IF;WB:1:500-1:1000,IHC:1:50-1:100,IF:1:100-1:200
Form	Supplied at 1.0mg/mL in phosphate buffered saline (without Mg ²⁺ and Ca ²⁺), pH 7.4, 150mM NaCl, 0.02% sodium azide and 50% glycerol.
Purification Method	Antibodies were produced by immunizing rabbits with synthetic phosphopeptide and KLH conjugates. Antibodies were purified by affinity-chromatography using epitope-specific phosphopeptide. Non-phospho specific antibodies were removed by chromatography usi
Clonality	Polyclonal
Alias	MMAC1; Mutated in multiple advanced cancers 1; Protein-tyrosine phosphatase PTEN; TEP1;
Product Type	Polyclonal Antibody
Immunogen Species	Homo sapiens (Human)
Target Names	PTEN

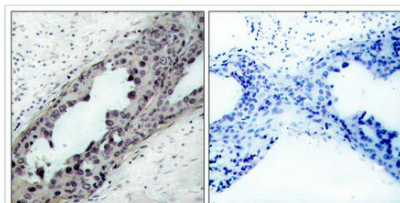
Image



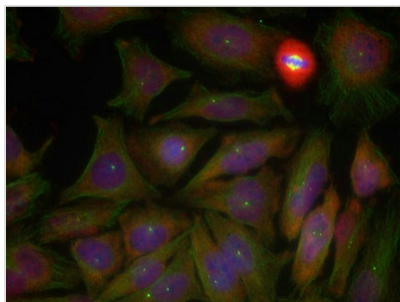
Western blot analysis of extracts from HeLa cells, treated with IFNa or calf intestinal phosphatase (CIP), using PTEN (Phospho-Ser380/Thr382/Thr383) Antibody.



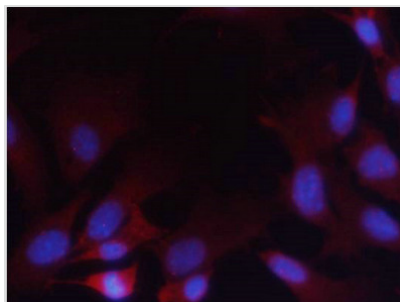
Western blot analysis of extracts from HeLa and C6 cells, treated with EGF or PMA, using PTEN(Phospho-Ser380/Thr382/Thr383) Antibody.



Immunohistochemical analysis of paraffin-embedded human breast carcinoma tissue, using PTEN(Phospho-Ser380/Thr382/Thr383) Antibody(left) or the same antibody preincubated with blocking peptide(right).



Immunofluorescence staining of methanol-fixed HeLa cells using PTEN(Phospho-Ser380/Thr382/Thr383) Antibody.



Immunofluorescence staining of methanol-fixed MEF cells using PTEN (Phospho-Ser380/Thr382/Thr383)Antibody.

Product Modify

Phospho-Ser380/Thr382/Thr383