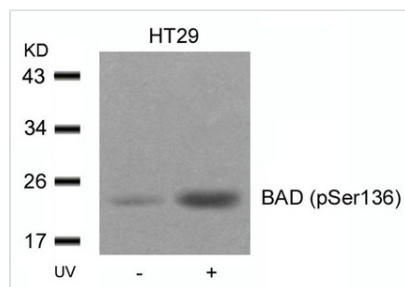




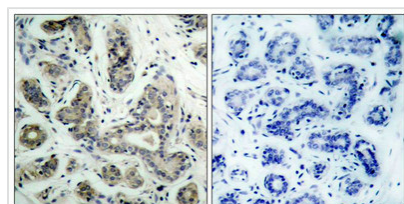
Phospho-Bad (Ser136) Antibody

Product Code	CSB-PA272097
Storage	Upon receipt, store at -20°C or -80°C. Avoid repeated freeze.
Uniprot No.	Q61337
Immunogen	Peptide sequence around phosphorylation site of serine136 (S-R-S(p)-A-P) derived from Mouse BAD.
Raised In	Rabbit
Species Reactivity	Human,Mouse,Rat
Specificity	The antibody detects endogenous level of BAD only when phosphorylated at serine136.
Tested Applications	ELISA,WB,IHC;WB:1:500-1:1000,IHC:1:50-1:100
Form	Supplied at 1.0mg/mL in phosphate buffered saline (without Mg ²⁺ and Ca ²⁺), pH 7.4, 150mM NaCl, 0.02% sodium azide and 50% glycerol.
Purification Method	Antibodies were produced by immunizing rabbits with synthetic phosphopeptide and KLH conjugates. Antibodies were purified by affinity-chromatography using epitope-specific phosphopeptide. Non-phospho specific antibodies were removed by chromatography usi
Clonality	Polyclonal
Alias	Bbc2
Product Type	Polyclonal Antibody
Immunogen Species	Mus musculus (Mouse)
Target Names	Bad

Image



Western blot analysis of extracts from HT29 cells untreated or treated with UV using BAD(Phospho-Ser136) Antibody.



Immunohistochemical analysis of paraffin-embedded human breast carcinoma tissue using BAD(Phospho-Ser136) Antibody(left) or the same antibody preincubated with blocking peptide(right).

Product Modify Phospho-Ser136

**Usage**

For Research Use Only. Not for use in diagnostic or therapeutic procedures.