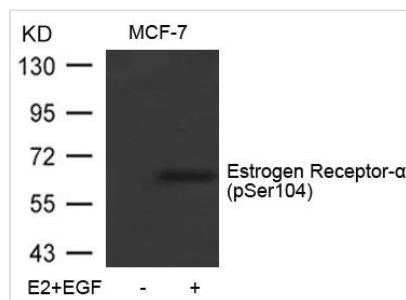




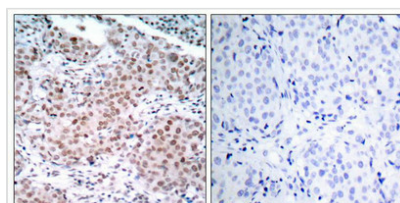
Phospho-ESR1 (Ser104) Antibody

Product Code	CSB-PA858084
Storage	Upon receipt, store at -20°C or -80°C. Avoid repeated freeze.
Uniprot No.	P03372
Immunogen	Peptide sequence around phosphorylation site of serine 104 (S-V-S(p)-P-S) derived from Human Estrogen Receptor- α .
Raised In	Rabbit
Species Reactivity	Human, Mouse
Specificity	The antibody detects endogenous level of Estrogen Receptor- α only when phosphorylated at serine104.
Tested Applications	ELISA, WB, IHC; WB: 1:500-1:1000, IHC: 1:50-1:100
Form	Supplied at 1.0mg/mL in phosphate buffered saline (without Mg ²⁺ and Ca ²⁺), pH 7.4, 150mM NaCl, 0.02% sodium azide and 50% glycerol.
Purification Method	Antibodies were produced by immunizing rabbits with synthetic phosphopeptide and KLH conjugates. Antibodies were purified by affinity-chromatography using epitope-specific phosphopeptide. Non-phospho specific antibodies were removed by chromatography
Clonality	Polyclonal
Alias	ER; ESR; ESR1; ESTR; ESTRA
Product Type	Polyclonal Antibody
Immunogen Species	Homo sapiens (Human)
Target Names	ESR1

Image



Western blot analysis of extracts from MCF-7 cells untreated or treated with E2 and EGF using Estrogen Receptor- α (Phospho-Ser104) Antibody



Immunohistochemical analysis of paraffin-embedded human breast carcinoma tissue using Estrogen Receptor- α (Phospho-Ser104) Antibody(left) or the same antibody preincubated with blocking peptide(right).

Product Modify Phospho-Ser104



Usage

For Research Use Only. Not for use in diagnostic or therapeutic procedures.