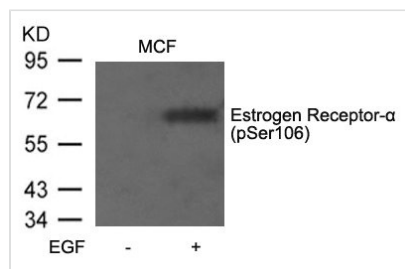




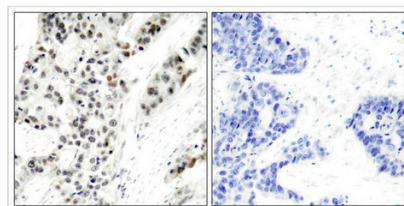
Phospho-ESR1 (Ser106) Antibody

Product Code	CSB-PA080696
Storage	Upon receipt, store at -20°C or -80°C. Avoid repeated freeze.
Uniprot No.	P03372
Immunogen	Peptide sequence around phosphorylation site of serine106 (S-P- S(p)-P-L) derived from Human Estrogen Receptor-α.
Raised In	Rabbit
Species Reactivity	Human,Mouse
Specificity	The antibody detects endogenous level of Estrogen Receptor-α only when phosphorylated at serine 106.
Tested Applications	ELISA,WB,IHC,IF;WB:1:500-1:1000,IHC:1:50-1:100,IF:1:100-1:200
Form	Supplied at 1.0mg/mL in phosphate buffered saline (without Mg ²⁺ and Ca ²⁺), pH 7.4, 150mM NaCl, 0.02% sodium azide and 50% glycerol.
Purification Method	Antibodies were produced by immunizing rabbits with synthetic phosphopeptide and KLH conjugates. Antibodies were purified by affinity-chromatography using epitope-specific phosphopeptide. Non-phospho specific antibodies were removed by chromatography using
Clonality	Polyclonal
Alias	ER; ESR; ESR1; ESTR; ESTRA
Product Type	Polyclonal Antibody
Immunogen Species	Homo sapiens (Human)
Target Names	ESR1

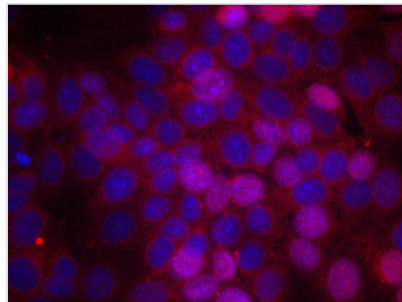
Image



Western blot analysis of extracts from MCF7 cells untreated or treated with EGF using Estrogen Receptor-α(Phospho-Ser106) Antibody.



Immunohistochemical analysis of paraffin-embedded human breast carcinoma tissue using Estrogen Receptor-α(Phospho-Ser106) Antibody(left) or the same antibody preincubated with blocking peptide(right).



Immunofluorescence staining of methanol-fixed MCF cells using Estrogen Receptor- α (Phospho-Ser106) Antibody.

Product Modify**Phospho-Ser106**