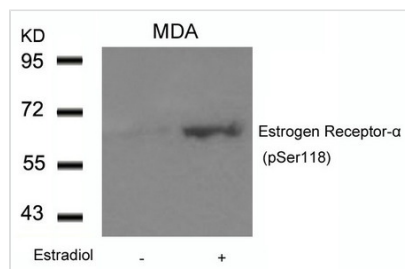




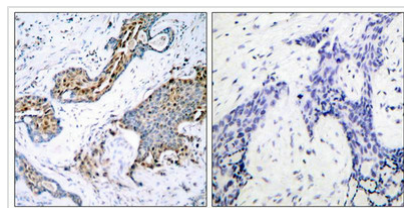
Phospho-ESR1 (Ser118) Antibody

Product Code	CSB-PA828752
Storage	Upon receipt, store at -20°C or -80°C. Avoid repeated freeze.
Uniprot No.	P03372
Immunogen	Peptide sequence around phosphorylation site of serine 118 (Q-L-S(p)-P-F) derived from Human Estrogen Receptor- α .
Raised In	Rabbit
Species Reactivity	Human,Mouse,Monkey
Specificity	The antibody detects endogenous level of Estrogen Receptor- α only when phosphorylated at serine 118.
Tested Applications	ELISA,WB,IHC,IF;WB:1:500-1:1000,IHC:1:50-1:100,IF:1:100-1:200
Form	Supplied at 1.0mg/mL in phosphate buffered saline (without Mg ²⁺ and Ca ²⁺), pH 7.4, 150mM NaCl, 0.02% sodium azide and 50% glycerol.
Purification Method	Antibodies were produced by immunizing rabbits with synthetic phosphopeptide and KLH conjugates. Antibodies were purified by affinity-chromatography using epitope-specific phosphopeptide. Non-phospho specific antibodies were removed by chromatography using
Clonality	Polyclonal
Alias	ER; ESR; ESR1; ESTR; ESTRA
Product Type	Polyclonal Antibody
Immunogen Species	Homo sapiens (Human)
Target Names	ESR1

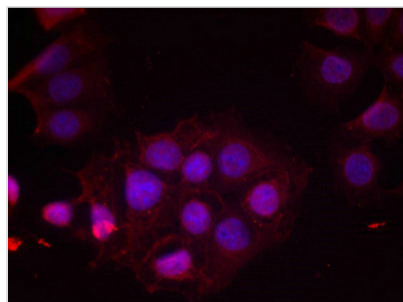
Image



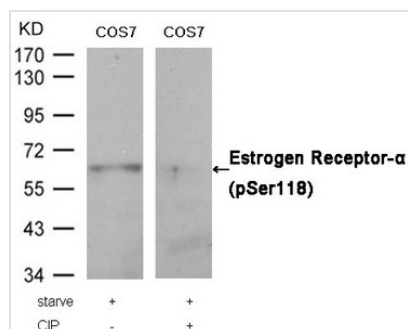
Western blot analysis of extracts from MDA cells untreated or treated with Estradiol using Estrogen Receptor- α (Phospho-Ser118) Antibody.



Immunohistochemical analysis of paraffin-embedded human breast carcinoma tissue using Estrogen Receptor- α (Phospho-Ser118) Antibody(left) or the same antibody preincubated with blocking peptide(right).



Immunofluorescence staining of methanol-fixed MCF cells using Estrogen Receptor-α(Phospho-Ser118) Antibody.



Western blot analysis of extracts from COS7 cells, treated with starve or calf intestinal phosphatase (CIP), using Estrogen Receptor-α (Phospho-Ser118) Antibody.

Product Modify

Phospho-Ser118