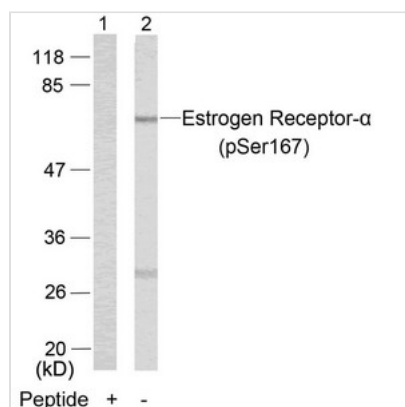




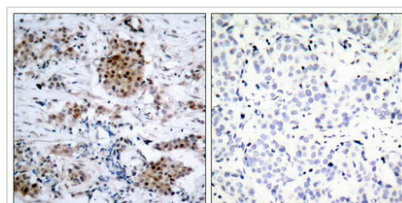
# Phospho-ESR1 (Ser167) Antibody

<b>Product Code</b>	CSB-PA041340
<b>Storage</b>	Upon receipt, store at -20°C or -80°C. Avoid repeated freeze.
<b>Uniprot No.</b>	P03372
<b>Immunogen</b>	Peptide sequence around phosphorylation site of serine 167 (L-A-S(p)-T-N) derived from Human Estrogen Receptor-α.
<b>Raised In</b>	Rabbit
<b>Species Reactivity</b>	Human, Mouse
<b>Specificity</b>	The antibody detects endogenous level of Estrogen Receptor-α only when phosphorylated at serine16.
<b>Tested Applications</b>	ELISA, WB, IHC, IF; WB: 1:500-1:1000, IHC: 1:50-1:100, IF: 1:100-1:200
<b>Form</b>	Supplied at 1.0mg/mL in phosphate buffered saline (without Mg <sup>2+</sup> and Ca <sup>2+</sup> ), pH 7.4, 150mM NaCl, 0.02% sodium azide and 50% glycerol.
<b>Purification Method</b>	Antibodies were produced by immunizing rabbits with synthetic phosphopeptide and KLH conjugates. Antibodies were purified by affinity-chromatography using epitope-specific phosphopeptide. Non-phospho specific antibodies were removed by chromatography.
<b>Clonality</b>	Polyclonal
<b>Alias</b>	ER; ESR; ESR1; ESTR; ESTRA
<b>Product Type</b>	Polyclonal Antibody
<b>Immunogen Species</b>	Homo sapiens (Human)
<b>Target Names</b>	ESR1

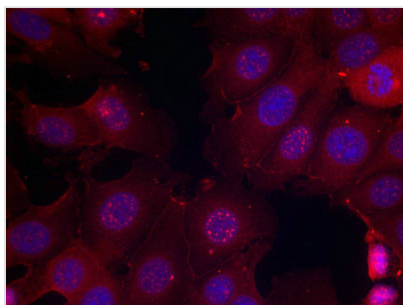
## Image



Western blot analysis of extracts from MCF7 cells using Estrogen Receptor-α(Phospho-Ser167) Antibody(Lane 2) and the same antibody preincubated with blocking peptide(Lane1).



Immunohistochemical analysis of paraffin-embedded human breast carcinoma tissue using Estrogen Receptor-α(Phospho-Ser167) Antibody(left) or the same antibody preincubated with blocking peptide(right).



Immunofluorescence staining of methanol-fixed MCF cells using Estrogen Receptor- $\alpha$ (Phospho-Ser167) Antibody.

---

**Product Modify****Phospho-Ser167**