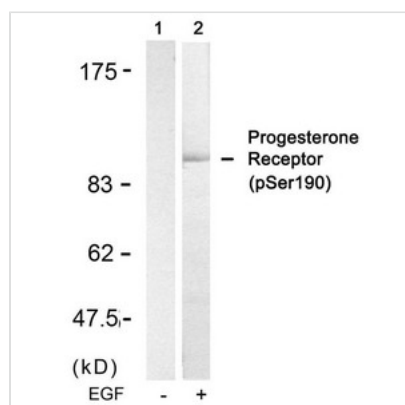




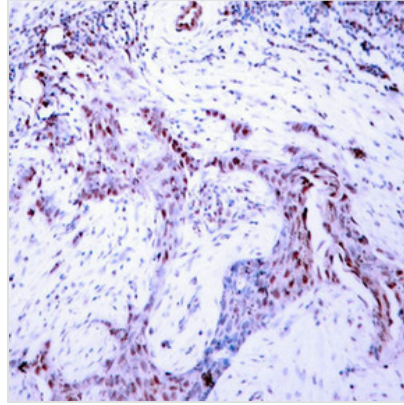
Phospho-PGR (Ser190) Antibody

Product Code	CSB-PA697709
Storage	Upon receipt, store at -20°C or -80°C. Avoid repeated freeze.
Uniprot No.	P06401
Immunogen	Peptide sequence around phosphorylation site of serine 190 (G-L-S(p)-P-A) derived from Human Progesterone Receptor.
Raised In	Rabbit
Species Reactivity	Human
Specificity	The antibody detects endogenous level of Progesterone Receptor only when phosphorylated at serine 190.
Tested Applications	ELISA,WB,IHC,IF;WB:1:500-1:1000,IHC:1:50-1:100,IF:1:100-1:200
Form	Supplied at 1.0mg/mL in phosphate buffered saline (without Mg ²⁺ and Ca ²⁺), pH 7.4, 150mM NaCl, 0.02% sodium azide and 50% glycerol.
Purification Method	Antibodies were produced by immunizing rabbits with synthetic phosphopeptide and KLH conjugates. Antibodies were purified by affinity-chromatography using epitope-specific phosphopeptide. Non-phospho specific antibodies were removed by chromatography usi
Clonality	Polyclonal
Alias	NR3C3; PGR; PRGR
Product Type	Polyclonal Antibody
Immunogen Species	Homo sapiens (Human)
Target Names	PGR

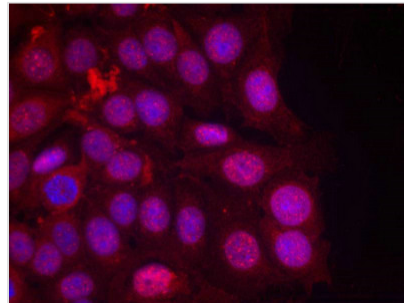
Image



Western blot analysis of extracts from SKOV3 cells untreated(lane 1) or treated with EGF(lane 2) using Progesterone Receptor(Phospho-Ser190) Antibody.



Immunohistochemical analysis of paraffin-embedded human breast carcinoma tissue using Progesterone Receptor(Phospho-Ser190) Antibody.



Immunofluorescence staining of methanol-fixed MCF cells using Progesterone Receptor(Phospho-Ser190) Antibody.

Product Modify

Phospho-Ser190

Usage

For Research Use Only. Not for use in diagnostic or therapeutic procedures.