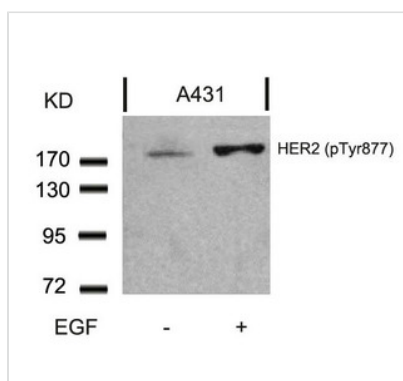




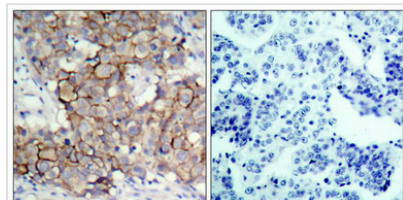
Phospho-ERBB2 (Tyr877) Antibody

Product Code	CSB-PA846722
Storage	Upon receipt, store at -20°C or -80°C. Avoid repeated freeze.
Uniprot No.	P04626
Immunogen	Peptide sequence around phosphorylation site of tyrosine 877 (T-E-Y(p)-H-A) derived from Human HER2.
Raised In	Rabbit
Species Reactivity	Human,Mouse,Rat
Specificity	The antibody detects endogenous level of HER2 only when phosphorylated at tyrosine 877.
Tested Applications	ELISA,WB,IHC,IF;WB:1:500-1:1000,IHC:1:50-1:100,IF:1:100-1:200
Form	Supplied at 1.0mg/mL in phosphate buffered saline (without Mg ²⁺ and Ca ²⁺), pH 7.4, 150mM NaCl, 0.02% sodium azide and 50% glycerol.
Purification Method	Antibodies were produced by immunizing rabbits with synthetic phosphopeptide and KLH conjugates. Antibodies were purified by affinity-chromatography using epitope-specific phosphopeptide. Non-phospho specific antibodies were removed by chromatography usi
Clonality	Polyclonal
Alias	C-erbB-2; ErbB2;
Product Type	Polyclonal Antibody
Immunogen Species	Homo sapiens (Human)
Target Names	ERBB2

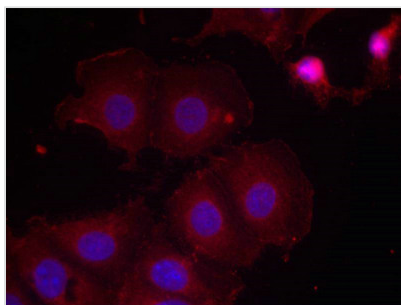
Image



Western blot analysis of extracts from A431 cells untreated or treated with EGF using HER2(Phospho-Tyr877) Antibody.



Immunohistochemical analysis of paraffin-embedded human breast carcinoma tissue, using HER2(Phospho-Tyr877) Antibody(left) or the same antibody preincubated with blocking peptide(right).



Immunofluorescence staining of methanol-fixed MCF7 cells using HER2(Phospho-Tyr877) Antibody.

Product Modify

Phospho-Tyr877

Usage

For Research Use Only. Not for use in diagnostic or therapeutic procedures.