



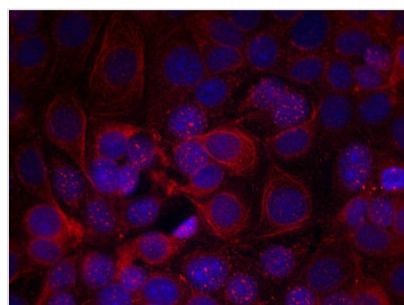
Phospho-ERBB2 (Tyr1221/Tyr1222) Antibody

Product Code	CSB-PA281422
Storage	Upon receipt, store at -20°C or -80°C. Avoid repeated freeze.
Uniprot No.	P04626
Immunogen	Peptide sequence around phosphorylation site of tyrosine1221/1222 (N-L-Y(p)-Y(p)-W) derived from Human HER2.
Raised In	Rabbit
Species Reactivity	Human
Specificity	The antibody detects endogenous level of HER2 only when phosphorylated at tyrosine1221/tyrosine1222.
Tested Applications	ELISA,WB,IF;WB:1:500-1:1000,IF:1:100-1:200
Form	Supplied at 1.0mg/mL in phosphate buffered saline (without Mg ²⁺ and Ca ²⁺), pH 7.4, 150mM NaCl, 0.02% sodium azide and 50% glycerol.
Purification Method	Antibodies were produced by immunizing rabbits with synthetic phosphopeptide and KLH conjugates. Antibodies were purified by affinity-chromatography using epitope-specific phosphopeptide. Non-phospho specific antibodies were removed by chromatography use
Clonality	Polyclonal
Alias	C-erbB-2; ErbB2;
Product Type	Polyclonal Antibody
Immunogen Species	Homo sapiens (Human)
Target Names	ERBB2

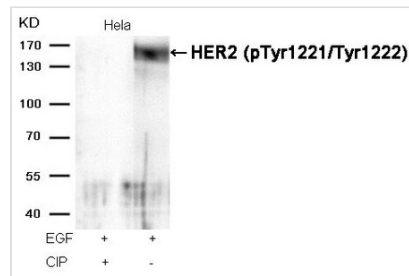
Image



Western blot analysis of extracts from MDA cells untreated or treated with EGF using HER2(Phospho-Tyr1221/Tyr1222) Antibody.



Immunofluorescence staining of methanol-fixed MCF cells using HER2(Phospho-Tyr1221/Tyr1222) Antibody.



Western blot analysis of extracts from HeLa cells, treated with EGF or calf intestinal phosphatase (CIP), using HER2 (Phospho-Tyr1221/Tyr1222) Antibody.

Product Modify

Phospho-Tyr1221/Tyr1222

Usage

For Research Use Only. Not for use in diagnostic or therapeutic procedures.