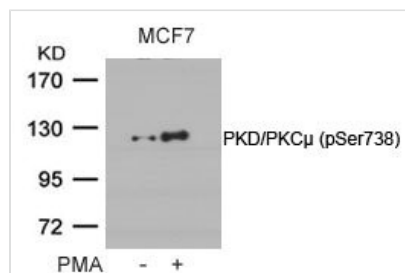




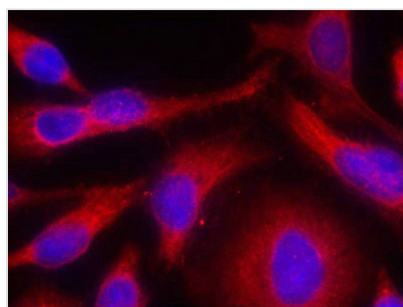
Phospho-PRKD1 (Ser738) Antibody

Product Code	CSB-PA899794
Storage	Upon receipt, store at -20°C or -80°C. Avoid repeated freeze.
Uniprot No.	Q15139
Immunogen	Peptide sequence around phosphorylation site of serine 738 (E-K-S(p)-F-R) derived from Human PKD/PKCm.
Raised In	Rabbit
Species Reactivity	Human,Mouse,Rat
Specificity	The antibody detects endogenous level of PKD/PKCm only when phosphorylated at serine 738.
Tested Applications	ELISA,WB,IF;WB:1:500-1:1000,IF:1:100-1:200
Form	Supplied at 1.0mg/mL in phosphate buffered saline (without Mg ²⁺ and Ca ²⁺), pH 7.4, 150mM NaCl, 0.02% sodium azide and 50% glycerol.
Purification Method	Antibodies were produced by immunizing rabbits with synthetic phosphopeptide and KLH conjugates. Antibodies were purified by affinity-chromatography using epitope-specific phosphopeptide. Non-phospho specific antibodies were removed by chromatography
Clonality	Polyclonal
Alias	KPCD1; PKC-mu; PKCM; PKD; PRKCM
Product Type	Polyclonal Antibody
Immunogen Species	Homo sapiens (Human)
Target Names	PRKD1

Image



Western blot analysis of extracts from MCF cells untreated or treated with PMA using PKD/PKCm(Phospho-Ser738) Antibody.



Immunofluorescence staining of methanol-fixed Hela cells using PKD/PKCm(Phospho-Ser738) Antibody.

**Product Modify**

Phospho-Ser738