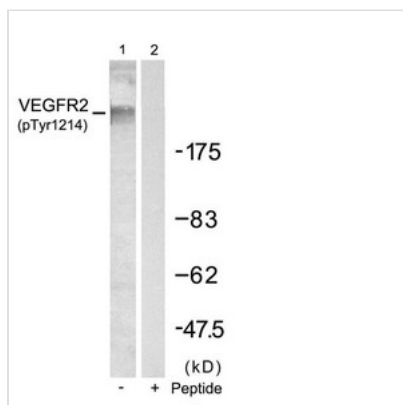




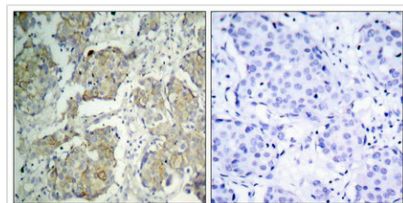
Phospho-KDR (Tyr1214) Antibody

Product Code	CSB-PA917275
Storage	Upon receipt, store at -20°C or -80°C. Avoid repeated freeze.
Uniprot No.	P35968
Immunogen	Peptide sequence around phosphorylation site of tyrosine 1214 (F-H-Y(p)-D-N) derived from Human VEGFR2.
Raised In	Rabbit
Species Reactivity	Human, Mouse
Specificity	The antibody detects endogenous level of VEGFR2 only when phosphorylated at tyrosine 1214.
Tested Applications	ELISA, WB, IHC, IF; WB: 1:500-1:1000, IHC: 1:50-1:100, IF: 1:100-1:200
Form	Supplied at 1.0mg/mL in phosphate buffered saline (without Mg ²⁺ and Ca ²⁺), pH 7.4, 150mM NaCl, 0.02% sodium azide and 50% glycerol.
Purification Method	Antibodies were produced by immunizing rabbits with synthetic phosphopeptide and KLH conjugates. Antibodies were purified by affinity-chromatography using epitope-specific phosphopeptide. Non-phospho specific antibodies were removed by chromatography
Clonality	Polyclonal
Alias	FLK1; KDR; VEGFR2; VEGR2; kinase insert domain receptor
Product Type	Polyclonal Antibody
Immunogen Species	Homo sapiens (Human)
Target Names	KDR

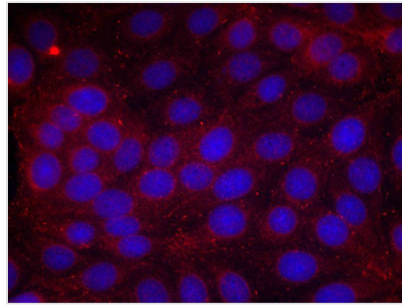
Image



Western blot analysis of extracts from SKOV3 cells using VEGFR2(Phospho-Tyr1214) Antibody(Lane 1) and the same antibody preincubated with blocking peptide(Lane2).



Immunohistochemical analysis of paraffin-embedded human breast carcinoma tissue using VEGFR2(Phospho-Tyr1214) Antibody(left) or the same antibody preincubated with blocking peptide(right).



Immunofluorescence staining of methanol-fixed MCF cells using VEGFR2(Phospho-Tyr1214) Antibody.

Product Modify

Phospho-Tyr1214

Usage

For Research Use Only. Not for use in diagnostic or therapeutic procedures.