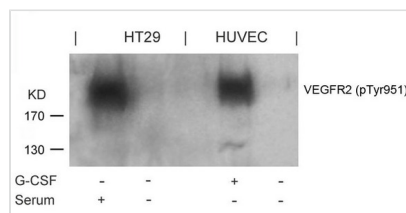




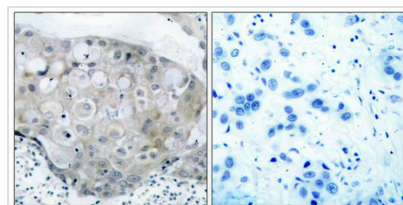
Phospho-KDR (Tyr951) Antibody

Product Code	CSB-PA200726
Storage	Upon receipt, store at -20°C or -80°C. Avoid repeated freeze.
Uniprot No.	P35968
Immunogen	Peptide sequence around phosphorylation site of tyrosine 951 (K-D-Y(p)-V-G) derived from Human VEGFR2.
Raised In	Rabbit
Species Reactivity	Human,Mouse,Rat
Specificity	The antibody detects endogenous level of VEGFR2 only when phosphorylated at tyrosine 951.
Tested Applications	ELISA,WB,IHC,IF;WB:1:500-1:1000,IHC:1:50-1:100,IF:1:100-1:200
Form	Supplied at 1.0mg/mL in phosphate buffered saline (without Mg ²⁺ and Ca ²⁺), pH 7.4, 150mM NaCl, 0.02% sodium azide and 50% glycerol.
Purification Method	Antibodies were produced by immunizing rabbits with synthetic phosphopeptide and KLH conjugates. Antibodies were purified by affinity-chromatography using epitope-specific phosphopeptide. Non-phospho specific antibodies were removed by chromatography using
Clonality	Polyclonal
Alias	FLK1; KDR; VEGFR2; VEGR2; kinase insert domain receptor
Product Type	Polyclonal Antibody
Immunogen Species	Homo sapiens (Human)
Target Names	KDR

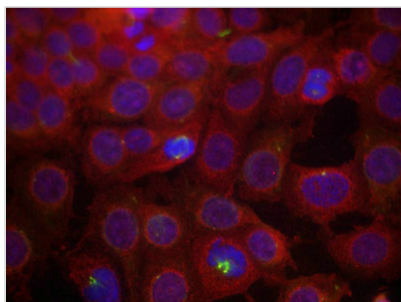
Image



Western blot analysis of extracts from G-CSF-treated HUVEC and serum-treated HT29 cells using VEGFR2(Phospho-Tyr951) Antibody.



Immunohistochemical analysis of paraffin-embedded human breast carcinoma tissue using VEGFR2(Phospho-Tyr951) Antibody(left) or the same antibody preincubated with blocking peptide(right).



Immunofluorescence staining of methanol-fixed MCF7 cells using VEGFR2(Phospho-Tyr951) Antibody.

Product Modify**Phospho-Tyr951**