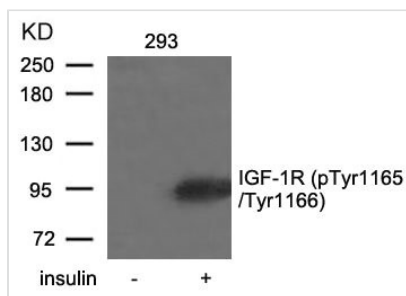




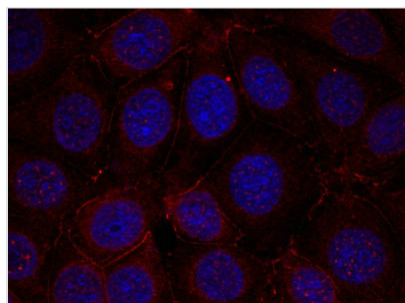
Phospho-IGF1R (Tyr1165/Tyr1166) Antibody

Product Code	CSB-PA597654
Storage	Upon receipt, store at -20°C or -80°C. Avoid repeated freeze.
Uniprot No.	P08069
Immunogen	Peptide sequence around phosphorylation site of tyrosine 1165/tyrosine 1166 (T-D-Y(p)-Y(p)-R-K) derived from Human IGF-1R .
Raised In	Rabbit
Species Reactivity	Human,Mouse,Rat
Specificity	The antibody detects endogenous level of IGF-1R only when phosphorylated at tyrosine 1165/tyrosine1166.
Tested Applications	ELISA,WB,IF;WB:1:500-1:1000,IF:1:100-1:200
Form	Supplied at 1.0mg/mL in phosphate buffered saline (without Mg ²⁺ and Ca ²⁺), pH 7.4, 150mM NaCl, 0.02% sodium azide and 50% glycerol.
Purification Method	Antibodies were produced by immunizing rabbits with synthetic phosphopeptide and KLH conjugates. Antibodies were purified by affinity-chromatography using epitope-specific phosphopeptide. Non-phospho specific antibodies were removed by chromatography usi
Clonality	Polyclonal
Alias	Insulin-like growth factor I receptor; CD221; IGF1R; kinase IGF1R;
Product Type	Polyclonal Antibody
Immunogen Species	Homo sapiens (Human)
Target Names	IGF1R

Image



Western blot analysis of extracts from 293 cells untreated or treated with insulin using IGF-1R(Phospho-Tyr1165/Tyr1166) Antibody.



Immunofluorescence staining of methanol-fixed MCF cells using IGF-1R(Phospho-Tyr1165/Tyr1166) Antibody.



Product Modify

Phospho-Tyr1165/Tyr1166

Usage

For Research Use Only. Not for use in diagnostic or therapeutic procedures.