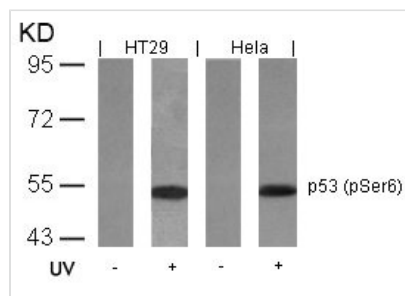




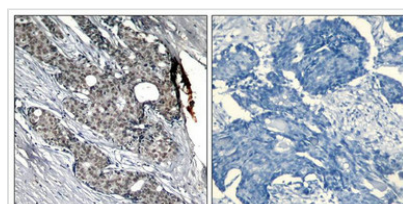
Phospho-TP53 (Ser6) Antibody

| | |
|----------------------------|--|
| Product Code | CSB-PA572207 |
| Storage | Upon receipt, store at -20°C or -80°C. Avoid repeated freeze. |
| Uniprot No. | P04637 |
| Immunogen | Peptide sequence around phosphorylation site of serine 6 (P-Q-S(p)-D-P) derived from Human p53. |
| Raised In | Rabbit |
| Species Reactivity | Human,Mouse |
| Specificity | The antibody detects endogenous level of p53 only when phosphorylated at serine 6. |
| Tested Applications | ELISA,WB,IHC;WB:1:500-1:1000,IHC:1:50-1:100 |
| Form | Supplied at 1.0mg/mL in phosphate buffered saline (without Mg ²⁺ and Ca ²⁺), pH 7.4, 150mM NaCl, 0.02% sodium azide and 50% glycerol. |
| Purification Method | Antibodies were produced by immunizing rabbits with synthetic phosphopeptide and KLH conjugates. Antibodies were purified by affinity-chromatography using epitope-specific phosphopeptide. Non-phospho specific antibodies were removed by chromatography usi |
| Clonality | Polyclonal |
| Alias | Antigen NY-CO-13; Phosphoprotein p53; TP53; Tumor suppressor p53; |
| Product Type | Polyclonal Antibody |
| Immunogen Species | Homo sapiens (Human) |
| Target Names | TP53 |

Image



Western blot analysis of extracts from HT29 and HeLa cells untreated or treated with UV using p53(Phospho-Ser6) Antibody.



Immunohistochemical analysis of paraffin-embedded human breast carcinoma tissue using p53(Phospho-Ser6) Antibody(left) or the same antibody preincubated with blocking peptide(right).

Product Modify Phospho-Ser6



Usage

For Research Use Only. Not for use in diagnostic or therapeutic procedures.