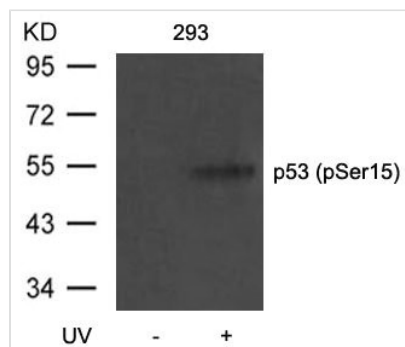




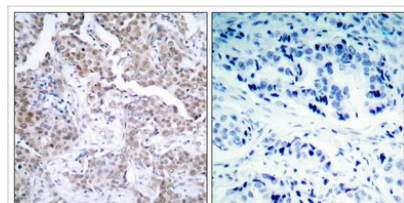
Phospho-TP53 (Ser15) Antibody

Product Code	CSB-PA157242
Storage	Upon receipt, store at -20°C or -80°C. Avoid repeated freeze.
Uniprot No.	P04637
Immunogen	Peptide sequence around phosphorylation site of serine 15 (P-L-S(p)-Q-E) derived from Human p53.
Raised In	Rabbit
Species Reactivity	Human
Specificity	The antibody detects endogenous level of p53 only when phosphorylated at serine15.
Tested Applications	ELISA, WB, IHC, IF; WB: 1:500-1:1000, IHC: 1:50-1:100, IF: 1:100-1:200
Form	Supplied at 1.0mg/mL in phosphate buffered saline (without Mg ²⁺ and Ca ²⁺), pH 7.4, 150mM NaCl, 0.02% sodium azide and 50% glycerol.
Purification Method	Antibodies were produced by immunizing rabbits with synthetic phosphopeptide and KLH conjugates. Antibodies were purified by affinity-chromatography using epitope-specific phosphopeptide. Non-phospho specific antibodies were removed by chromatography
Clonality	Polyclonal
Alias	Tumor suppressor p53; Phosphoprotein p53; Antigen NY-CO-13; TP53;
Product Type	Polyclonal Antibody
Immunogen Species	Homo sapiens (Human)
Target Names	TP53

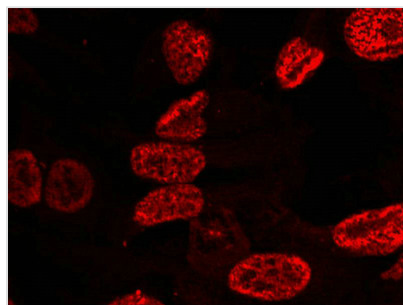
Image



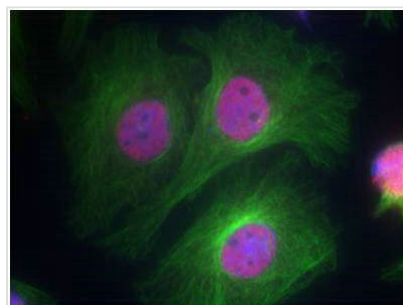
Western blot analysis of extracts from 293 cells untreated or treated with UV using p53(Phospho-Ser15) Antibody.



Immunohistochemical analysis of paraffin-embedded human breast carcinoma tissue using p53 (Phospho-Ser15) Antibody (left) or the same antibody preincubated with blocking peptide (right).



Immunofluorescence staining of methanol-fixed HeLa cells using p53(Phospho-Ser15) Antibody.



Immunofluorescence staining of methanol-fixed HeLa cells using p53 (Phospho-Ser15) Antibody.

Product Modify

Phospho-Ser15