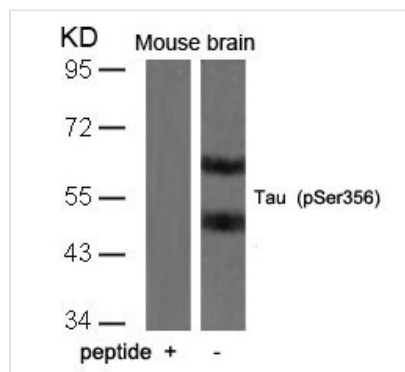




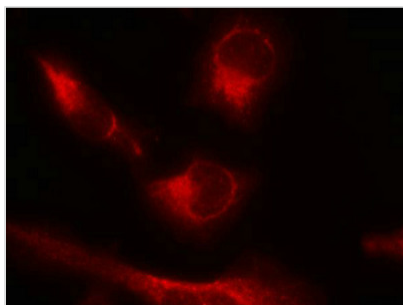
# Phospho-MAPT (Ser356) Antibody

<b>Product Code</b>	CSB-PA252810
<b>Storage</b>	Upon receipt, store at -20°C or -80°C. Avoid repeated freeze.
<b>Uniprot No.</b>	P10636
<b>Immunogen</b>	Peptide sequence around phosphorylation site of serine 356 (I-G-S(p)-L-D) derived from Human Tau.
<b>Raised In</b>	Rabbit
<b>Species Reactivity</b>	Human,Mouse,Rat
<b>Specificity</b>	The antibody detects endogenous level of Tau only when phosphorylated at serine356.
<b>Tested Applications</b>	ELISA,WB,IF;WB:1:500-1:1000,IF:1:100-1:200
<b>Form</b>	Supplied at 1.0mg/mL in phosphate buffered saline (without Mg <sup>2+</sup> and Ca <sup>2+</sup> ), pH 7.4, 150mM NaCl, 0.02% sodium azide and 50% glycerol.
<b>Purification Method</b>	Antibodies were produced by immunizing rabbits with synthetic phosphopeptide and KLH conjugates. Antibodies were purified by affinity-chromatography using epitope-specific phosphopeptide. Non-phospho specific antibodies were removed by chromatography using
<b>Clonality</b>	Polyclonal
<b>Alias</b>	MAPT; MTAPT; MTBT1; Neurofibrillary tangle protein; PHF-tau
<b>Product Type</b>	Polyclonal Antibody
<b>Immunogen Species</b>	Homo sapiens (Human)
<b>Target Names</b>	MAPT

## Image



Western blot analysis of extracts from mouse brain tissue using Tau(Phospho-Ser356) Antibody and the same antibody preincubated with blocking peptide.



Immunofluorescence staining of methanol-fixed Hela cells using Tau(Phospho-Ser356) Antibody.

---

Product Modify

Phospho-Ser356